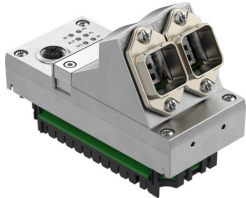


# Interface CPX-M-FB44

Part number: 8110370



 General operating condition

## Data sheet

Feature	Value
Protocol	PROFINET IRT PROFINET RT
Dimensions (W x L x H)	(incl. interlinking block) 50 x 107 x 80 mm
Product weight	280 g
Ambient temperature	-5 °C ... 50 °C
Storage temperature	-20 °C ... 70 °C
Degree of protection	IP65 IP67
Corrosion resistance class CRC	0 - No corrosion stress
LABS (PWIS) conformity	VDMA24364-B2-L
Approval	RCM trademark
Note on materials	RoHS-compliant
Material housing	Die-cast aluminium
LED display, product-specific	M: Modify, parameterisation PL: Load supply PS: Electronics supply, sensor supply SF: System fault
LED display, bus-specific	M/P: maintenance/PROFIenergy NF: Network fault TP1: Network active port 1 TP2: Network active port 2
Device-specific diagnostics	Channel-oriented and module-oriented diagnostics Undervoltage of modules Diagnostic memory
Operator controls	DIL switch
Field bus interface	2x RJ45 push-pull socket, AIDA
Max. address volume, inputs	64 Byte
Max. address volume, outputs	64 Byte
Parameterisation	Diagnostic behaviour Fail-safe response Forcing of channels Signal setup System parameter
Baud rate	100 Mbit/s
Configuration support	GSDML file

Feature	Value
Additional functions	Acyclic data access via fieldbus Asynchronous data access via Ethernet Fast start-up (FSU) I Channel-oriented diagnostics via fieldbus LLDP MQTT MRP MRPD PROFIenergy PROFI-safe S2 system redundancy Start-up parameterisation in plain text via fieldbus System status can be mapped using process data Additional diagnostic interface for operator units
Operational voltage range DC	18 V ... 30 V
Nominal operating voltage DC	24 V
Intern power consumption nominal operating voltage	Typ. 70 mA