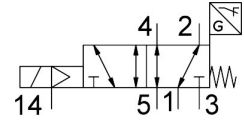
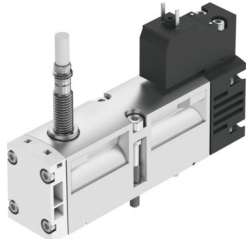


Solenoid valve

VSVA-B-M52-MZ-A1-1C1-APC

Part number: 560725

FESTO



General operating condition

Data sheet

Feature	Value
Valve function	5/2-way, monostable
Type of actuation	Electric
Construction width	26 mm
Standard nominal flow rate (standardised to DIN 1343)	1100 l/min
pneumatic working port	Sub-base size 26 mm to ISO 15407-1 Sub-base size 01 to VDMA 24563 G1/4
Operating voltage	24V DC
Operating pressure	-0.09 MPa ... 1.6 MPa
Operating pressure	-0.9 bar ... 16 bar
Design	Piston gate valve
Type of reset	Mechanical spring
Approval	C-Tick c UL us - Recognized (OL)
KC mark	KC-EMV
CE mark (see declaration of conformity)	To EU EMC Directive
Certificate issuing authority	UL MH19482
CE marking (see declaration of conformity)	To UK instructions for EMC
Degree of protection	IP65 NEMA 4
Nominal size	9 mm
Exhaust-air function	With flow control option Via throttle plate Via individual sub-base
Sealing principle	Soft
Mounting position	optional
Conforms to standard	ISO 15407-1 VDMA 24563
Manual override	Covered
Type of piloting	Pilot actuated
Pilot air supply	External
Flow direction	optional
Symbol	00997391
Measuring principle	Inductive
lap	Overlap
Reverse polarity protection sensor	For all electrical connections
Signal status display	With accessories
Switching position sensing	Normal position via sensor

Feature	Value
Switching status display sensor	LED
Pilot pressure	0.3 MPa ... 1 MPa
Pilot pressure	3 bar ... 10 bar
Flow rate of valve	1400 l/min
Flow rate of valve on individual sub-base	1100 l/min
Flow rate of pneumatically interlinked valve	1100 l/min
Switching time off	41 ms
Switching time on	21 ms
Valve - sensor switching time on	60 ms
Valve - sensor switching time off	11 ms
Duty cycle	100%
Max. positive test pulse with 0 signal	1800 µs
Max. negative test pulse with 1 signal	800 µs
Nominal operating voltage DC	24 V
Switching output	PNP
Characteristic coil data	24 V DC: 1.8 W
Permissible voltage fluctuations	-15%/+10%
Operating medium	Compressed air to ISO 8573-1:2010 [7:4:4]
Note on operating and pilot medium	Lubricated operation possible (in which case lubricated operation will always be required)
Vibration resistance	Transport application test with severity level 2 to FN 942017-4 and EN 60068-2-6
Shock resistance	Shock test with severity level 2 to FN 942017-5 and EN 60068-2-27
Corrosion resistance class CRC	0 - No corrosion stress
LABS (PWIS) conformity	VDMA24364-B1/B2-L
Media temperature	-5 °C ... 50 °C
Relative air humidity	0 - 90%
Sound pressure level	85 dB(A)
Ambient temperature	-5 °C ... 50 °C
Max. tightening torque for valve mounting	1,8 Nm ... 2,2 Nm
Product weight	332 g
Operating voltage range, DC sensor	10 V ... 30 V
Short-circuit strength sensor	Pulsed
Idle current sensor	≤10 mA
Max. output current sensor	200 mA
Max. switching frequency sensor	5000 Hz
Residual ripple sensor	± 10%
Voltage drop sensor	≤2 V
Electrical connection	Type C To EN 175301-803 Without protective earth conductor
Sensor connection	Cable 2,5 m
Type of mounting	On sub-base
Pilot air port 12/14	Sub-base size 26 mm to ISO 15407-1
Pilot exhaust port 82/84	Ducted Not ducted Either:
Pneumatic connection, port 1	Sub-base size 26 mm to ISO 15407-1
Pneumatic connection, port 2	Sub-base size 26 mm to ISO 15407-1
Pneumatic connection, port 3	Sub-base size 26 mm to ISO 15407-1
Pneumatic connection, port 4	Sub-base size 26 mm to ISO 15407-1
Pneumatic connection, port 5	Sub-base size 26 mm to ISO 15407-1
Pilot control interface	To ISO 15218
Note on materials	RoHS-compliant

Feature	Value
Material seals	FPM NBR
Material housing	Die-cast aluminium PA
Material screws	Galvanised steel
Switching element function	N/C contact