

Compressor  
Voltage Code : FZ

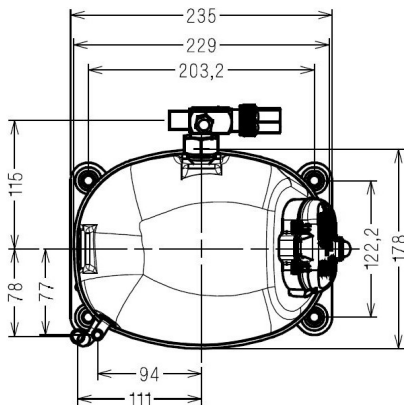
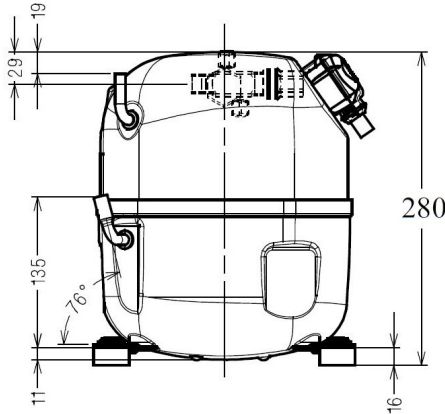
# AJ4510P-FZ

High Temp. Commercial (HP)

220 - 240V 1~ 50 Hz

R452A / R404A / R448A / R449A / R455A / R454C AJ4510P-FZ3A

Conditions	Frequency	Nominal Cooling Capacity		Sound Power ISO3745 / ISO 3743-1
		Watts	BTU/h	
EN12900_HP / R452A	50 Hz	2378	8110	63 dBA
EN12900_HP / R404A	50 Hz	2352	8020	63 dBA
EN12900_HP / R448A	50 Hz	2440	8321	63 dBA
EN12900_HP / R449A	50 Hz	2436	8307	63 dBA
EN12900_HP / R455A	50 Hz	2346	8001	63 dBA
EN12900_HP / R454C	50 Hz	2081	7095	63 dBA



<b>Displacement (cc)</b>	18,3
<b>Net Weight (Kg)</b>	21.5
<b>Oil Quantity (cc)</b>	475.0
<b>Oil Type</b>	Polyolester
<b>Expansion Device</b>	Capillary_Tube/Expansion_Valve
<b>Cooling</b>	Fan
<b>Main Winding (Ohm)</b>	2.9
<b>Start Winding (Ohm)</b>	8.8
<b>Current</b>	
RLA (A)	5,4
MCC (A)	8,4
LRA (A)	29.5
<b>Electrical Equipment</b>	CSR
<b>Overload</b>	MRA38128
Time Check	2.8s - 5.2s / 20.5 A
Open Temp	105° C
Close Temp	52° C
Optional	T0813
<b>Start Capacitor</b>	100 µF / 330 V
<b>Run Capacitor</b>	15 µF / 400 V
<b>Potential Relay</b>	RVA40**
Pick Up	280/310V
Drop Out	60/121V
<b>Refrigerating connection for</b>	
Suction Tube	15.9 (5/8")
Discharge Tube	7.9 (5/16")
Process Tube	6.35 (1/4")

\* EN12900\_HP : T°Cond. 50.0°C / T°Evap. 5.0°C / T°Return gas temp.. 20.0°C  
T°Subcooling. 0.0K

Certificates :



Note : Tecumseh reserves the right to change information contained in this document without notification.



**Tecumseh**

<b>AJ4510P-FZ</b>	<b>Tension FZ : 220 - 240V 1~ 50 Hz</b>
-------------------	---

Les performances sont données dans les <b>conditions EN12900_HP</b> :	Gaz aspirés :	20.0 °C
Condition Mid	Sous refroidissement :	0.0 K
The performance data are in <b>EN12900_HP conditions</b> :	Return gas :	20.0 °C
Mid Condition	Subcooling :	0.0 K

<b>50 Hz R452A</b>											
											<b>N°3642</b>
4   T condensation	5   T évaporation	(°C)	<b>-25</b>	<b>-20</b>	<b>-15</b>	<b>-10</b>	<b>-5</b>	<b>0</b>	<b>5</b>	<b>10</b>	<b>15</b>
<b>30</b>	1   P frigorifique	(Watt)	930	1207	1537	1928	2389	2926	3550	4266	5083
	2   P absorbée	(W)	570	631	689	743	791	833	869	897	917
	3   I absorbée	(A)	2.76	3.03	3.28	3.52	3.74	3.96	4.15	4.34	4.51
<b>40</b>	1   P frigorifique	(Watt)		982	1267	1600	1988	2440	2964	3567	4258
	2   P absorbée	(W)		659	733	805	872	935	992	1043	1086
	3   I absorbée	(A)		3.10	3.44	3.77	4.09	4.39	4.68	4.96	5.22
<b>50</b>	1   P frigorifique	(Watt)			994	1269	1586	1953	2378	2870	3434
	2   P absorbée	(W)			762	852	939	1023	1102	1176	1244
	3   I absorbée	(A)			3.56	3.98	4.38	4.78	5.16	5.53	5.89
<b>60</b>	1   P frigorifique	(Watt)				937	1184	1467	1795	2175	2616
	2   P absorbée	(W)				884	991	1097	1199	1296	1389
	3   I absorbée	(A)				4.13	4.62	5.11	5.59	6.05	6.50

<b>50 Hz R404A</b>											
											<b>N°3641</b>
4   T condensation	5   T évaporation	(°C)	<b>-25</b>	<b>-20</b>	<b>-15</b>	<b>-10</b>	<b>-5</b>	<b>0</b>	<b>5</b>	<b>10</b>	<b>15</b>
<b>30</b>	1   P frigorifique	(Watt)	970	1241	1564	1945	2391	2911	3510	4197	4979
	2   P absorbée	(W)	586	645	701	752	797	836	868	891	907
	3   I absorbée	(A)	2.86	3.11	3.35	3.58	3.78	3.97	4.15	4.31	4.45
<b>40</b>	1   P frigorifique	(Watt)	775	1018	1297	1622	1998	2434	2935	3510	4166
	2   P absorbée	(W)	604	679	751	819	883	941	993	1039	1076
	3   I absorbée	(A)	2.86	3.20	3.53	3.84	4.14	4.42	4.69	4.94	5.17
<b>50</b>	1   P frigorifique	(Watt)		788	1024	1292	1598	1949	2352	2815	3344
	2   P absorbée	(W)		698	787	873	956	1034	1108	1175	1236
	3   I absorbée	(A)		3.26	3.67	4.08	4.46	4.83	5.19	5.53	5.85
<b>60</b>	1   P frigorifique	(Watt)			747	958	1193	1459	1763	2114	2517
	2   P absorbée	(W)			809	915	1017	1117	1212	1303	1387
	3   I absorbée	(A)			3.78	4.27	4.75	5.21	5.65	6.08	6.49

1 = cooling capacity 2 = power input 3 = current 4 = condensing temperature 5 = evaporating temperature

**Nota : Tecumseh se réserve le droit de modifier les informations contenues dans ce document sans préavis.**

**Note : Tecumseh reserves the right to change information contained in this document without notification.**

© 2023 Tecumseh Products Company  
All rights reserved



**Tecumseh**

<b>AJ4510P-FZ</b>	<b>Tension FZ : 220 - 240V 1~ 50 Hz</b>
-------------------	---

Les performances sont données dans les **conditions EN12900\_HP** :  
 Condition Mid  
 The performance data are in **EN12900\_HP conditions** :  
 Mid Condition

Gaz aspirés : 20.0 °C  
 Sous refroidissement : 0.0 K  
 Return gas : 20.0 °C  
 Subcooling : 0.0 K

© 2023 Tecumseh Products Company  
All rights reserved

**50 Hz R448A (\*)**

**N°3643**

4   T condensation	5   T évaporation	(°C)	-25	-20	-15	-10	-5	0	5	10	15
<b>30</b>	1   P frigorifique	(Watt)	858	1135	1466	1859	2324	2870	3505	4237	5076
	2   P absorbée	(W)	543	600	655	706	753	795	829	855	872
	3   I absorbée	(A)	2.62	2.87	3.11	3.34	3.56	3.77	3.97	4.14	4.30
<b>40</b>	1   P frigorifique	(Watt)		928	1217	1557	1956	2423	2968	3598	4323
	2   P absorbée	(W)		631	702	770	835	896	951	998	1038
	3   I absorbée	(A)		2.97	3.29	3.61	3.91	4.21	4.49	4.75	5.00
<b>50</b>	1   P frigorifique	(Watt)			970	1258	1593	1984	2440	2970	3583
	2   P absorbée	(W)			734	822	907	990	1067	1139	1203
	3   I absorbée	(A)			3.43	3.84	4.23	4.62	5.00	5.36	5.70
<b>60</b>	1   P frigorifique	(Watt)				969	1241	1558	1928	2360	2863
	2   P absorbée	(W)				858	966	1072	1174	1272	1364
	3   I absorbée	(A)				4.00	4.51	5.00	5.47	5.94	6.38

**50 Hz R449A (\*)**

**N°3640**

4   T condensation	5   T évaporation	(°C)	-25	-20	-15	-10	-5	0	5	10	15
<b>30</b>	1   P frigorifique	(Watt)	856	1133	1463	1856	2321	2866	3501	4233	5073
	2   P absorbée	(W)	542	599	654	706	753	794	829	855	872
	3   I absorbée	(A)	2.62	2.87	3.11	3.34	3.56	3.77	3.96	4.14	4.30
<b>40</b>	1   P frigorifique	(Watt)		926	1214	1554	1952	2419	2964	3594	4319
	2   P absorbée	(W)		630	701	770	835	895	950	998	1038
	3   I absorbée	(A)		2.96	3.29	3.61	3.91	4.21	4.49	4.75	4.99
<b>50</b>	1   P frigorifique	(Watt)			968	1255	1589	1980	2436	2966	3578
	2   P absorbée	(W)			733	821	907	989	1067	1139	1203
	3   I absorbée	(A)			3.42	3.83	4.23	4.62	5.00	5.36	5.70
<b>60</b>	1   P frigorifique	(Watt)				966	1238	1554	1924	2355	2857
	2   P absorbée	(W)				857	965	1072	1174	1272	1364
	3   I absorbée	(A)				4.00	4.50	4.99	5.47	5.94	6.38

1 = cooling capacity 2 = power input 3 = current 4 = condensing temperature 5 = evaporating temperature

(\*) Veuillez vous référer strictement aux Recommandations d'Utilisation et Bulletins Marketing Tecumseh du fait de la température de refoulement élevée pour les applications LBP.

(\*) Due to very high discharge temperature especially on LBP conditions, please strictly refer to Tecumseh Guidelines & Marketing Bulletin when using this refrigerant.

**Nota : Tecumseh se réserve le droit de modifier les informations contenues dans ce document sans préavis.**

**Note : Tecumseh reserves the right to change information contained in this document without notification.**




Tecumseh


<b>AJ4510P-FZ</b>	<b>Tension FZ : 220 - 240V 1~ 50 Hz</b>
-------------------	---

Les performances sont données dans les **conditions EN12900\_HP** :  
 Condition Mid

The performance data are in **EN12900\_HP conditions** :  
 Mid Condition

Gaz aspirés : 20.0 °C  
 Sous refroidissement : 0.0 K  
 Return gas : 20.0 °C  
 Subcooling : 0.0 K

<b>50 Hz R455A</b>											
 <b>N°3276</b>											
4   T condensation	5   T évaporation	(°C)	-25	-20	-15	-10	-5	0	5	10	15
<b>30</b>	1   P frigorifique	(Watt)	849	1123	1448	1831	2280	2804	3410	4107	4902
	2   P absorbée	(W)	543	605	658	704	745	783	820	858	898
	3   I absorbée	(A)	2.65	2.92	3.17	3.38	3.58	3.75	3.89	4.02	4.14
<b>40</b>	1   P frigorifique	(Watt)		896	1179	1509	1896	2347	2870	3474	4166
	2   P absorbée	(W)		620	697	764	824	878	929	978	1026
	3   I absorbée	(A)		3.00	3.35	3.66	3.94	4.20	4.42	4.62	4.79
<b>50</b>	1   P frigorifique	(Watt)			919	1199	1524	1904	2346	2859	3450
	2   P absorbée	(W)			710	804	889	965	1036	1102	1165
	3   I absorbée	(A)			3.40	3.84	4.24	4.60	4.93	5.22	5.48
<b>60</b>	1   P frigorifique	(Watt)				907	1173	1483	1846	2270	2761
	2   P absorbée	(W)				815	931	1035	1132	1221	1305
	3   I absorbée	(A)				3.90	4.44	4.93	5.39	5.81	6.18

<b>50 Hz R454C</b>											
 <b>N°3277</b>											
4   T condensation	5   T évaporation	(°C)	-25	-20	-15	-10	-5	0	5	10	15
<b>30</b>	1   P frigorifique	(Watt)	788	1021	1300	1633	2027	2491	3031	3657	4374
	2   P absorbée	(W)	505	555	604	650	692	729	758	778	788
	3   I absorbée	(A)	2.47	2.70	2.92	3.14	3.33	3.49	3.61	3.67	3.67
<b>40</b>	1   P frigorifique	(Watt)		836	1075	1357	1691	2083	2542	3075	3689
	2   P absorbée	(W)		585	646	706	762	813	856	892	916
	3   I absorbée	(A)		2.83	3.11	3.38	3.64	3.88	4.07	4.22	4.31
<b>50</b>	1   P frigorifique	(Watt)			864	1099	1375	1700	2081	2525	3041
	2   P absorbée	(W)			677	755	829	898	961	1016	1061
	3   I absorbée	(A)			3.24	3.60	3.94	4.27	4.57	4.83	5.03
<b>60</b>	1   P frigorifique	(Watt)				858	1081	1342	1649	2009	2430
	2   P absorbée	(W)				772	869	961	1047	1126	1195
	3   I absorbée	(A)				3.70	4.15	4.59	5.01	5.39	5.73

1 = cooling capacity 2 = power input 3 = current 4 = condensing temperature 5 = evaporating temperature

Nota : Tecumseh se réserve le droit de modifier les informations contenues dans ce document sans préavis.

Note : Tecumseh reserves the right to change information contained in this document without notification.

© 2023 Tecumseh Products Company  
All rights reserved