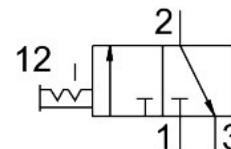


# On/off valve MS9-EM-G-S-VS

Part number: 562952

FESTO



 General operating condition

## Data sheet

Feature	Value
Series	MS
Size	9
Grid dimension	90 mm
Design	Piston gate valve
Type of actuation	Manual
Sealing principle	Soft
Exhaust-air function	Without flow control option
Actuator lock	Rotary knob with detent
Type of reset	Forced
Type of piloting	Direct
Symbol	00991670
Valve function	3/2 double solenoid
Operating pressure	0 bar ... 20 bar
lap	Overlap
Standard nominal flow rate (standardised to DIN 1343)	18000 l/min
Standard nominal flow rate 2-3	14100 l/min
Operating medium	Compressed air to ISO 8573-1:2010 [7:4:4]
Note on operating and pilot medium	Lubricated operation possible (in which case lubricated operation will always be required)
Corrosion resistance class CRC	2 - Moderate corrosion stress
Note on materials	RoHS-compliant
LABS (PWIS) conformity	VDMA24364-B1/B2-L
Media temperature	-10 °C ... 60 °C
Sound pressure level	93 dB(A)
Ambient temperature	-10 °C ... 60 °C
Type of mounting	Either: In-line installation With accessories
Mounting position	optional
Product weight	2400 g
Pneumatic connection, port 3	G1
Material piston slide	POM
Material seals	NBR
Material housing	Die-cast aluminium