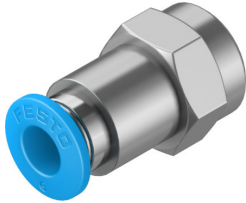


Push-in fitting QSF-1/8-6-B

Part number: 153023

FESTO



 General operating condition

Data sheet

Feature	Value
Size	Standard
Nominal size	5 mm
Type of seal on screwed plug	Coating
Mounting position	optional
Design	Straight design
Size of pack	10
Design	Push-pull principle
Operating pressure complete temperature range	-0.095 MPa ... 0.6 MPa
Operating pressure complete temperature range	-0.95 bar ... 6 bar
Operating pressure complete temperature range	-13.775 psi ... 87 psi
Temperature-dependent operating pressure	-0.095 MPa ... 1.4 MPa
Temperature-dependent operating pressure	-0.95 bar ... 14 bar
Temperature-dependent operating pressure	-13.775 psi ... 203 psi
Note on operating pressure	Water: max. 0.6 MPa at max. 50°C
Operating medium	Compressed air to ISO 8573-1:2010 [7:-:-] Water (liquid, ice-free)
Note on operating and pilot medium	Lubricated operation possible
Corrosion resistance class CRC	1 - Low corrosion stress
LABS (PWIS) conformity	VDMA24364-B1/B2-L
Ambient temperature	-10 °C ... 80 °C
Nominal torque	7 Nm
Tolerance for nominal tightening torque	± 20%
Product weight	15 g
Type of mounting	External hexagon, size 14 mm
Pneumatic connection, port 1	Female thread G1/8
Pneumatic connection, port 2	For tubing outside diameter of 6 mm
Colour of release ring	Blue
Note on materials	RoHS-compliant
Material housing	Brass, nickel-plated
Material release ring	POM
Material tubing seal	NBR
Material tubing clamp component	High-alloy stainless steel