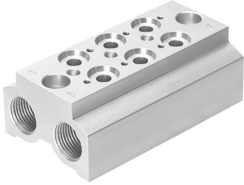


# Manifold block CPE14-3/2-PRS-3/8-3

Part number: 550560

FESTO



 General operating condition

## Data sheet

Feature	Value
Grid dimension	20 mm
Mounting position	optional
Max. number of valve positions	3
Max. number of pressure zones	2
Burst pressure	5 MPa
Burst pressure	50 bar
Burst pressure	725 psi
Operating pressure	-0.09 MPa ... 1 MPa
Operating pressure	-0.9 bar ... 10 bar
Corrosion resistance class CRC	2 - Moderate corrosion stress
LABS (PWIS) conformity	VDMA24364-B1/B2-L
Media temperature	-5 °C ... 50 °C
Ambient temperature	-5 °C ... 50 °C
Max. tightening torque for valve mounting	1.2 Nm
Product weight	228 g
Type of mounting in-line valve manifold	With through-hole
Mounting method for valve	Via female thread
Pneumatic connection, port 1	G3/8
Pneumatic connection, port 3	G3/8
Pneumatic connection, port 5	G3/8
Note on materials	RoHS-compliant
Material manifold rail	Wrought aluminium alloy