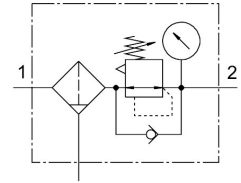


# Filter regulator MS9-LFR-G-D6-CUM-AG-BAR-AS

Part number: 564114

FESTO



 General operating condition

## Data sheet

| Feature   | Value  |
|---|--|
| Size  | 9  |
| Series  | MS   |
| Actuator lock   | can be closed with accessories   |
| Mounting position                                     | Vertical +/-5°   |
| Grade of filtration                                   | 5 µm   |
| Condensate drain                                      | Manually rotating  |
| Design  | Piloted filter diaphragm regulator   |
| Max. condensate volume                                | 220 ml   |
| Controller function                                   | Output pressure constant<br>Via primary pressure compensation<br>With secondary venting<br>With return flow function |
| Degree of condensate separation                       | >75 %  |
| Symbol  | 00991589   |
| Pressure gauge (ANALOG) or Pressure display (DIGITAL) | With pressure gauge  |
| Operating pressure                                    | 1 bar ... 20 bar   |
| Pressure regulation range                             | 0.5 bar ... 7 bar  |
| Max. pressure hysteresis                              | 0.4 bar  |
| Operating medium                                      | Compressed air to ISO 8573-1:2010 [-:4:-]<br>Inert gases   |
| Corrosion resistance class CRC                        | 2 - Moderate corrosion stress  |
| LABS (PWIS) conformity                                | VDMA24364-B1/B2-L  |
| Storage temperature                                   | -10 °C ... 60 °C   |
| Air purity class at output                            | Compressed air to ISO 8573-1:2010 [6:4:4]  |
| Media temperature                                     | -10 °C ... 60 °C   |
| Ambient temperature                                   | -10 °C ... 60 °C   |
| Pore size   | 5 µm   |
| Product weight  | 2400 g   |
| Type of mounting                                      | Either:<br>In-line installation<br>With accessories  |
| Material covering                                     | PA-reinforced  |
| Material spin disc                                    | POM  |
| Material filter carrier                               | POM  |
| Note on materials                                     | RoHS-compliant   |
| Material sub-base                                     | Die-cast aluminium   |

| <b>Feature</b>            | <b>Value</b>                          |
|---------------------------|---------------------------------------|
| Material mounting bracket | Die-cast aluminium                    |
| Material filter           | PE                                    |
| Material housing          | Die-cast aluminium                    |
| Material module connector | Die-cast aluminium                    |
| Material membrane         | NBR                                   |
| Material bowl             | Wrought aluminium alloy               |
| Material cup seal         | NBR                                   |
| Material screen           | PA                                    |
| Material separating plate | POM                                   |
| Material valve stem       | Wrought aluminium alloy<br>NBR<br>POM |