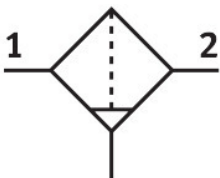



Activated carbon filter

MS6-LFX-1/2-U-HF

Part number: 552927

FESTO



 General operating condition

Data sheet

Feature	Value
Size	6
Series	MS
Mounting position	Vertical +/-5°
Design	Activated carbon filter
Bowl guard	Integrated as metal bowl
Symbol	00991519
Operating pressure	0 bar ... 20 bar
Max. standard flow rate for clean air class	2500 l/min
Operating medium	Compressed air to ISO 8573-1:2010 [1:4:2] Inert gases
Corrosion resistance class CRC	2 - Moderate corrosion stress
LABS (PWIS) conformity	VDMA24364-B1/B2-L
Storage temperature	-10 °C ... 60 °C
Air purity class at output	Compressed air according to ISO 8573-1:2010 [1:4:1]
Media temperature	5 °C ... 30 °C
Residual oil content	0.003 mg/m³
Ambient temperature	-10 °C ... 60 °C
Product weight	1500 g
Type of mounting	Either: In-line installation With accessories
Pneumatic connection, port 1	G1/2
Pneumatic connection, port 2	G1/2
Note on materials	RoHS-compliant
Material filter	Activated carbon
Material housing	Die-cast aluminium
Material bowl	Wrought aluminium alloy