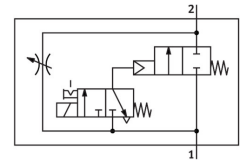


Soft start valve MS6-DE-1/2-V110

Part number: 529799

FESTO



 General operating condition

Data sheet

| Feature | Value |
|---|--|
| Type of actuation | Electric |
| Mounting position | optional |
| Manual override | Detenting Non-detenting |
| Design | Piston seat |
| Type of reset | Mechanical spring |
| Type of piloting | Pilot actuated |
| Pilot air supply | Internal |
| Flow direction | Non-reversible |
| Symbol | 00991501 |
| Valve function | 2/2 |
| Switching position indicator | With accessories |
| Operating pressure | 4 bar ... 18 bar |
| b value | 0.39 |
| C value | 28.97 l/sbar |
| Standard nominal flow rate (standardised to DIN 1343) | 6450 l/min |
| Duty cycle | 100% |
| Characteristic coil data | 110 V AC: 50/60 Hz, pick-up power 3.0 VA, holding power 2.4 VA |
| Approval | c UL - Recognized (OL) |
| Operating medium | Compressed air to ISO 8573-1:2010 [7:4:4] Inert gases |
| Note on operating and pilot medium | Lubricated operation possible (in which case lubricated operation will always be required) |
| Corrosion resistance class CRC | 2 - Moderate corrosion stress |
| LABS (PWIS) conformity | VDMA24364-B1/B2-L |
| Suitable for use with food | See supplementary material information |
| Media temperature | -10 °C ... 60 °C |
| Degree of protection | IP65 |
| Ambient temperature | -10 °C ... 60 °C |
| Product weight | 680 g |
| Electrical connection | Type C Plugs To DIN EN 175301-803 Square design |
| Signal status display | With accessories |

| Feature | Value |
|------------------------------|---|
| Type of mounting | Either: In-line installation With accessories |
| Pneumatic connection, port 1 | G1/2 |
| Pneumatic connection, port 2 | G1/2 |
| Note on materials | RoHS-compliant |
| Material seals | NBR |
| Material housing | Die-cast aluminium |