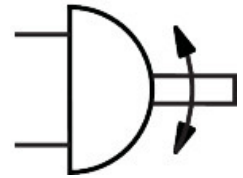
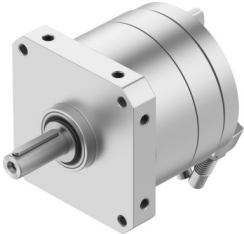


Semi-rotary drive DSM-T-32-270-CC-A-B

Part number: 1145106

FESTO



 General operating condition

Data sheet

Feature	Value
Size	32
Cushioning angle	12 deg
Rotation angle adjustment range	0 deg ... 246 deg
Swivel angle	0 deg ... 246 deg
Cushioning	Shock absorber at both ends
Mounting position	optional
Fine adjustment	-3 deg
Mode of operation	Double-acting
Design	Vane
Position detection	Via proximity switch
Symbol	00991265
Operating pressure	0.2 MPa ... 1 MPa
Operating pressure	2 bar ... 10 bar
Max. swivel frequency at 0.6 MPa (6 bar, 87 psi)	0.7 Hz
Operating medium	Compressed air to ISO 8573-1:2010 [7::-:]
Corrosion resistance class CRC	0 - No corrosion stress
LABS (PWIS) conformity	VDMA24364-B2-L
Ambient temperature	-10 °C ... 60 °C
Max. axial force	75 N
Max. radial force	200 N
Theoretical torque at 0.6 MPa (6 bar, 87 psi)	20 Nm
Permissible mass moment of inertia	0.05 kgm ²
Product weight	2075 g
Type of mounting	Via female thread
Pneumatic connection	G1/8
Note on materials	RoHS-compliant
Material drive shaft	Steel Nickel-plated
Material seals	TPE-U(PU)
Material housing	Wrought aluminium alloy