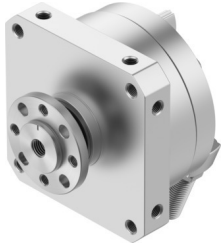


# Semi-rotary drive DSM-40-270-P1-FW-A-B

Part number: 566212

FESTO



 General operating condition

## Data sheet

Feature	Value
Size	40
Cushioning angle	6.5 deg
Rotation angle adjustment range	0 deg ... 240 deg
Swivel angle	0 deg ... 240 deg
Cushioning	Elastic cushioning rings/pads at both ends with fixed stop
Mounting position	optional
Fine adjustment	-6 deg
Mode of operation	Double-acting
Design	Vane
Position detection	Via proximity switch
Symbol	00991265
Operating pressure	0.15 MPa ... 1 MPa
Operating pressure	1.5 bar ... 10 bar
Max. swivel frequency at 0.6 MPa (6 bar, 87 psi)	2 Hz
Operating medium	Compressed air to ISO 8573-1:2010 [7::-]
Corrosion resistance class CRC	0 - No corrosion stress
LABS (PWIS) conformity	VDMA24364-B1/B2-L
Ambient temperature	-10 °C ... 60 °C
Max. axial force	120 N
Max. radial force	350 N
Theoretical torque at 0.6 MPa (6 bar, 87 psi)	20 Nm
Permissible mass moment of inertia	0.105 kgm <sup>2</sup>
Product weight	3005 g
Type of mounting	Via female thread
Pneumatic connection	G1/8
Note on materials	RoHS-compliant
Material drive shaft	Steel Nickel-plated
Material seals	TPE-U(PU)
Material housing	Wrought aluminium alloy