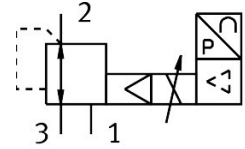


# Proportional-pressure regulator MPPES-3-1/4-10-010

Part number: 187333

FESTO



 [General operating condition](#)

## Data sheet

Feature	Value
Nominal size, supply	7 mm
Nominal size, exhaust	7 mm
Type of actuation	Electric
Sealing principle	Soft
Mounting position	optional
Design	Piloted piston regulator
Short circuit current rating	For all electrical connections
Safety instructions	Safety position MPPES: if the power supply cable is interrupted, the output pressure drops to 0 bar.
Symbol	00995304
Reverse polarity protection	For all electrical connections
Valve function	3-way proportional-pressure regulator, closed
Operating pressure	≤1.2 MPa
Operating pressure	≤12 bar
Pressure regulation range	0 MPa ... 1 MPa
Pressure regulation range	0 bar ... 10 bar
Inlet pressure 1	11 bar ... 12 bar
Inlet pressure 1	1.1 MPa ... 1.2 MPa
Max. pressure hysteresis	0.005 MPa
Max. pressure hysteresis	0.05 bar
Switching time off	360 ms
Switching time on	200 ms
Operational voltage range DC	18 V ... 30 V
Nominal operating voltage DC	24 V
Reference voltage	10 V
Residual ripple	10 %
SETPOINT/ACTUAL values	Voltage type 0 - 10 V
Operating medium	Compressed air to ISO 8573-1:2010 [7:4:4] Inert gases
Note on operating and pilot medium	Lubricated operation possible (in which case lubricated operation will always be required)
Approval	RCM trademark
KC mark	KC-EMV
CE mark (see declaration of conformity)	To EU EMC Directive In accordance with EU RoHS Directive

<b>Feature</b>	<b>Value</b>
CE marking (see declaration of conformity)	To UK instructions for EMC To UK RoHS instructions
Corrosion resistance class CRC	2 - Moderate corrosion stress
LABS (PWIS) conformity	VDMA24364-B2-L
Media temperature	0 °C ... 60 °C
Degree of protection	IP65
Ambient temperature	0 °C ... 50 °C
Product weight	1310 g
Electrical connection	8-pin M16x0.75 Plugs To DIN 45326 Round design
Type of mounting	With through-hole
Pneumatic connection, port 1	G1/4
Pneumatic connection, port 2	G1/4
Pneumatic connection, port 3	G1/4
Note on materials	RoHS-compliant
Material housing	Wrought aluminium alloy
Material membrane	NBR