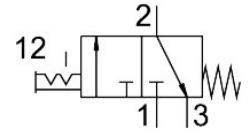


On/off valve HE-1/4-D-MIDI

Part number: 186513

FESTO



[PDF](#) General operating condition

Data sheet

| Feature | Value |
|---|--|
| Design | Piston gate valve |
| Type of actuation | Manual |
| Sealing principle | Soft |
| Exhaust-air function | Without flow control option |
| Manual override | None |
| Symbol | 00995571 |
| Valve function | 3/2 double solenoid |
| Operating pressure | 0 MPa ... 1.6 MPa |
| Operating pressure | 0 bar ... 16 bar |
| C value | 9.9 l/sbar |
| b value | 0.45 |
| Standard nominal flow rate (standardised to DIN 1343) | 2600 l/min |
| Operating medium | Compressed air to ISO 8573-1:2010 [7:4:4] Inert gases |
| Note on operating and pilot medium | Lubricated operation possible (in which case lubricated operation will always be required) |
| Corrosion resistance class CRC | 2 - Moderate corrosion stress |
| Note on materials | RoHS-compliant |
| LABS (PWIS) conformity | VDMA24364-B1/B2-L |
| Media temperature | -10 °C ... 60 °C |
| Ambient temperature | -10 °C ... 60 °C |
| Type of mounting | In-line installation With accessories |
| Mounting position | optional |
| Flow direction | Non-reversible |
| Product weight | 511 g |
| Pneumatic connection, port 1 | G1/4 |
| Pneumatic connection, port 2 | G1/4 |
| Pneumatic connection, port 3 | G1/4 |
| Air purity class at output | Compressed air to ISO 8573-1:2010 [7:4:4] Inert gases |
| Material seals | NBR |
| Material housing | Die-cast aluminium |