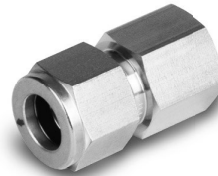
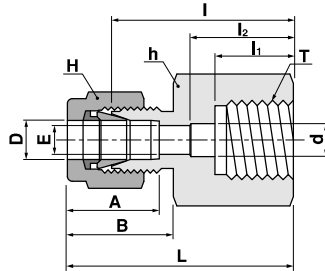


Gauge Connector
SCG

See page 32
for SGG gasket



Connects fractional tube to male ISO parallel thread (gauge)

Part No.	Tube O.D		T G(PF)	E Min.	Width across flat				A	B	I	I ₁	I ₂	d	L
	D				h		H								
	in	mm			in	mm	in	mm							
SCG-4-2G	1/4	6.35	1/8	4.82	9/16	14.28	9/16	14.28	15.24	17.78	26.30	12.00	17.00	5.60	33.55
SCG-4-4G	1/4	6.35	1/4	4.82	3/4	19.05	9/16	14.28	15.24	17.78	30.22	12.95	17.00	5.60	37.59
SCG-4-6G	1/4	6.35	3/8	4.82	7/8	22.22	9/16	14.28	15.24	17.78	30.22	14.22	18.00	6.60	37.59
SCG-4-8G	1/4	6.35	1/2	4.82	1-1/16	26.98	9/16	14.28	15.24	17.78	36.07	18.80	22.00	7.10	43.43
SCG-5-4G	5/16	7.93	1/4	6.35	3/4	19.05	5/8	15.87	16.25	18.54	30.98	12.95	-	-	38.60
SCG-5-8G	5/16	7.93	1/2	6.35	1-1/16	26.98	5/8	15.87	16.25	18.54	33.53	18.80	-	-	40.89
SCG-6-4G	3/8	9.52	1/4	7.11	3/4	19.05	11/16	17.46	16.76	19.30	31.75	12.95	-	-	39.12
SCG-6-6G	3/8	9.52	3/8	7.11	7/8	22.22	11/16	17.46	16.76	19.30	31.24	14.22	-	-	38.61
SCG-6-8G	3/8	9.52	1/2	7.11	1-1/16	26.98	11/16	17.46	16.76	19.30	34.54	18.80	-	-	41.91
SCG-8-4G	1/2	12.70	1/4	10.41	13/16	20.64	7/8	22.22	22.86	21.84	31.80	12.95	-	-	41.95
SCG-8-6G	1/2	12.70	3/8	10.41	7/8	22.22	7/8	22.22	22.86	21.84	34.29	14.22	-	-	44.45
SCG-8-8G	1/2	12.70	1/2	10.41	1-1/16	26.98	7/8	22.22	22.86	21.84	38.10	18.80	-	-	48.26

Connects metric tube to male ISO parallel thread (gauge)

Part No.	Tube O.D		T G(PF)	E Min.	Width across flat		A	B	I	I ₁	I ₂	d	L		
	D				h									H	
	in	mm			in	mm								in	mm
SCG-3M-4G	3	1/4	2.4	19	12	12.9	15.3	28.7	13	17.0	5.5	35.3			
SCG-6M-4G	6	1/4	4.8	19	14	15.3	17.7	30.2	13	17.0	5.5	37.6			
SCG-6M-6G	6	3/8	4.8	24	14	15.3	17.7	30.2	14	18.0	6.5	37.6			
SCG-6M-8G	6	1/2	4.8	27	14	15.3	17.7	36.1	19	22.0	7.0	43.5			
SCG-8M-4G	8	1/4	6.4	19	16	16.2	18.6	31.0	13	-	5.5	38.5			
SCG-8M-6G	8	3/8	6.4	24	16	16.2	18.6	28.7	14	-	6.5	36.2			
SCG-8M-8G	8	1/2	6.4	27	16	16.2	18.6	33.5	19	-	7.0	41.0			
SCG-10M-4G	10	1/4	7.9	19	19	17.2	19.5	31.8	13	-	5.5	39.4			
SCG-10M-6G	10	3/8	7.9	24	19	17.2	19.5	31.2	14	-	6.5	38.8			
SCG-10M-8G	10	1/2	7.9	27	19	17.2	19.5	34.5	19	-	7.0	42.1			
SCG-12M-4G	12	1/4	9.5	22	22	22.8	22.0	31.8	13	-	5.5	41.9			
SCG-12M-6G	12	3/8	9.5	24	22	22.8	22.0	34.3	14	-	6.5	44.4			
SCG-12M-8G	12	1/2	9.5	27	22	22.8	22.0	38.1	19	-	7.0	48.2			
SCG-20M-8G	20	1/2	15.9	30	32	26.0	22.0	44.2	19	-	7.0	54.3			
SCG-22M-8G	22	1/2	9.5	30	32	22.8	22.0	44.2	19	-	7.0	54.3			