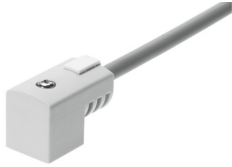


# Plug socket with cable KMEB-3-24-2.5

Part number: 547270

FESTO



 General operating condition

## Data sheet

Feature	Value
Mounting position	optional
Product weight	120 g
Electrical connection 1	Socket, to EN 175301-803, type C
Electrical connection 1, design	Angular
Electrical connection 1, connection type	Socket
Electrical connection 1, cable outlet	Angled
Electrical connection 1, note on cable outlet	90°
Electrical connection 1, number of connections/cores	2
Electrical connection 1, type of mounting	On solenoid valve via M2.5 central screw
Electrical connection 2, connector system	Open end
Electrical connection 2, number of connections/cores	2
Nominal operating voltage DC	24 V
Reverse polarity protection	For all electrical connections
Protective conductor connection	Not available
Cable length	2.5 m
Cable characteristic	Standard
Cable diameter	5.2 mm
Cable structure	2 x 0.75 mm <sup>2</sup>
Wire ends	Wire ferrule
Degree of protection	IP65 To IEC 60529
Ambient temperature	-20 °C ... 80 °C
CE mark (see declaration of conformity)	In accordance with EU RoHS Directive
CE marking (see declaration of conformity)	To UK RoHS instructions
LABS (PWIS) conformity	VDMA24364-B2-L
Pollution degree	3
Corrosion resistance class CRC	1 - Low corrosion stress
Material cable sheath	PVC
Material housing	PC
Material seals	NBR
Material electrical contact	Silver-plated copper alloy