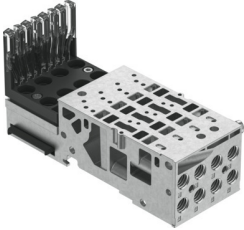


# Sub-base VMPA1-AP-4-1-EMS-8

Part number: 546802

FESTO



 [General operating condition](#)

## Data sheet

Feature	Value
Width	42 mm
Length	107.3 mm
Grid dimension	10.5 mm
Max. number of valve positions	4
Operating pressure	-0.09 MPa ... 1 MPa
Operating pressure	-0.9 bar ... 10 bar
Pilot pressure	0.3 MPa ... 0.8 MPa
Pilot pressure	3 bar ... 8 bar
Corrosion resistance class CRC	0 - No corrosion stress
LABS (PWIS) conformity	VDMA24364-B1/B2-L
Ambient temperature	-5 °C ... 50 °C
Product weight	210 g
Pneumatic connection, port 2	M7
Pneumatic connection, port 4	M7
Note on materials	RoHS-compliant
Material sub-base	Die-cast aluminium