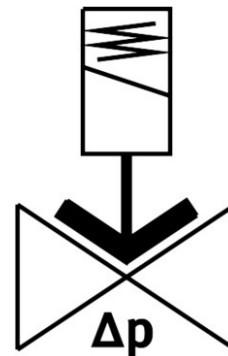
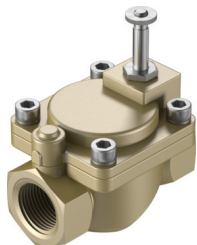



Solenoid valve VZWM-L-M22C-G1-F4

Part number: 546150

FESTO



 General operating condition

Data sheet

Feature	Value
Design	Diaphragm valve servo-controlled
Type of actuation	Electric
Sealing principle	Soft
Mounting position	Preferably vertical
Type of mounting	In-line installation
Connection Process valve	G1
Electrical connection	Solenoid coil type MD-... , coil can be ordered as an accessory
Nominal size	27.5 mm
Valve function	2/2-way, closed, monostable
Flow direction	Non-reversible
Medium	Compressed air to ISO 8573-1:2010 [7:4:4] Inert gases Water Neutral fluids
Medium pressure, valve for liquid media	0.5 bar ... 6 bar
Medium pressure, valve for gaseous media	0.5 bar ... 10 bar
Pressure difference	0.5 bar
Type of piloting	Pilot actuated
Symbol	00995681
Max. viscosity	22 mm ² /s
Media temperature	-10 °C ... 60 °C
Media temperature for fluids	5 °C ... 50 °C
Ambient temperature	-10 °C ... 60 °C
Flow rate Kv	10.7 m ³ /h
Standard nominal flow rate (standardised to DIN 1343)	11700 l/min
Switching time on	15 ms
Switch-on time for fluids	400 ms
Switching time off	12 ms
Switch-off time for fluids	750 ms

Feature	Value
b value	0.57
C value	41 l/sbar
Note on materials	RoHS-compliant
LABS (PWIS) conformity	VDMA24364 zone III
Material housing	Brass
Material number housing	2.0402
Material seals	NBR
Material plunger tube	High-alloy steel
Product weight	1200 g
CE mark (see declaration of conformity)	In accordance with EU Pressure Equipment Directive
CE marking (see declaration of conformity)	to UK Pressure Equipment Regulations
Corrosion resistance class CRC	1 - Low corrosion stress
Max. tightening torque for cover screw	30 Nm
Max. tightening torque for connecting thread	350 Nm
Max. tightening torque for coil fastening	0.5 Nm