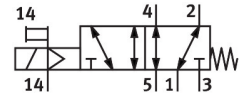


Solenoid valve VSVA-B-M52-MZD-D1-1T1L

Part number: 543699

FESTO



[General operating condition](#)

Data sheet

Feature	Value
Valve function	5/2-way, monostable
Type of actuation	Electric
Construction width	42 mm
Standard nominal flow rate (standardised to DIN 1343)	1300 l/min
pneumatic working port	Sub-base size 1 to ISO 5599-2 G3/8
Operating voltage	24V DC
Operating pressure	-0.09 MPa ... 1 MPa
Operating pressure	-0.9 bar ... 10 bar
Design	Piston gate valve
Type of reset	Mechanical spring
Approval	c UL us - Recognized (OL)
Degree of protection	IP65 NEMA 4
Exhaust-air function	With flow control option Via throttle plate Via individual sub-base
Sealing principle	Soft
Mounting position	optional
Manual override	Detenting Non-detenting Covered
Type of piloting	Pilot actuated
Pilot air supply	External
Flow direction	optional
Symbol	00991190
Signal status display	LED
Pilot pressure	0.3 MPa ... 1 MPa
Pilot pressure	3 bar ... 10 bar
Flow rate of valve	1800 l/min
Flow rate of valve on individual sub-base	1500 l/min
Valve flow rate, pneumatically linked, flow optimized	1860 l/min
Flow rate of pneumatically interlinked valve	1300 l/min
Switching time off	60 ms
Switching time on	22 ms
Max. positive test pulse with 0 signal	1400 µs
Max. negative test pulse with 1 signal	900 µs

Feature	Value
Nominal pick-up current per solenoid coil	72 mA to 30 ms
Characteristic coil data	24 V DC: 1.6 W
Immunity to surge	2.5 kV
Pollution degree	3
Permissible voltage fluctuations	+/- 10 %
Operating medium	Compressed air to ISO 8573-1:2010 [7:4:4]
Note on operating and pilot medium	Lubricated operation possible (in which case lubricated operation will always be required)
Vibration resistance	Transport application test with severity level 2 to FN 942017-4 and EN 60068-2-6
Shock resistance	Shock test with severity level 2 to FN 942017-5 and EN 60068-2-27
Corrosion resistance class CRC	0 - No corrosion stress
LABS (PWIS) conformity	VDMA24364-B1/B2-L
Relative air humidity	0 - 90%
Ambient temperature	-5 °C ... 50 °C
Product weight	426 g
Electrical connection	Plug-in To ISO 5599-2
Type of mounting	On sub-base
Pilot air port 12/14	Sub-base size 1 to ISO 5599-2
Pilot exhaust port 82/84	Ducted Not ducted as per standard Either:
Pneumatic connection, port 1	Sub-base size 1 to ISO 5599-2
Pneumatic connection, port 2	Sub-base size 1 to ISO 5599-2
Pneumatic connection, port 3	Sub-base size 1 to ISO 5599-2
Pneumatic connection, port 4	Sub-base size 1 to ISO 5599-2
Pneumatic connection, port 5	Sub-base size 1 to ISO 5599-2
Note on materials	RoHS-compliant
Material seals	FPM HNBR NBR
Material housing	Die-cast aluminium PA
Material screws	Galvanised steel