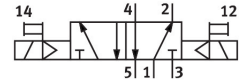
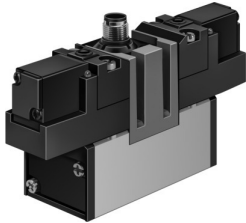


Solenoid valve JMEBH-5/2-D-3-ZSR-C

Part number: 184509

FESTO



[PDF](#) General operating condition

Data sheet

Feature	Value
Valve function	5/2 double solenoid
Type of actuation	Electric
Construction width	65 mm
Standard nominal flow rate (standardised to DIN 1343)	4500 l/min
pneumatic working port	Sub-base size 3 to ISO 5599-1 G1/2
Operating voltage	24V DC
Operating pressure	0.2 MPa ... 1 MPa
Operating pressure	2 bar ... 10 bar
Design	Piston gate valve
Degree of protection	IP65
Nominal size	14.5 mm
Grid dimension	71 mm
Exhaust-air function	With flow control option
Sealing principle	Soft
Mounting position	optional
Conforms to standard	ISO 5599-1
Manual override	Non-detenting
ISO code	355
Type of piloting	Pilot actuated
Pilot air supply	Internal
Flow direction	Non-reversible
Symbol	00991005
Switching time reversal	16 ms
Characteristic coil data	24 V DC: 2.5 W
Operating medium	Compressed air to ISO 8573-1:2010 [7:4:4]
Note on operating and pilot medium	Lubricated operation possible (in which case lubricated operation will always be required)
Corrosion resistance class CRC	2 - Moderate corrosion stress
LABS (PWIS) conformity	VDMA24364-B1/B2-L
Media temperature	-10 °C ... 50 °C
Ambient temperature	-10 °C ... 50 °C
Product weight	1080 g
Electrical connection	M12x1 Central plug Round design
Type of mounting	With through-hole

Feature	Value
Pilot exhaust port 82	Not ducted
Pilot exhaust port 84	Not ducted
Pneumatic connection, port 1	Sub-base size 3 to ISO 5599-1
Pneumatic connection, port 2	Sub-base size 3 to ISO 5599-1
Pneumatic connection, port 3	Sub-base size 3 to ISO 5599-1
Pneumatic connection, port 4	Sub-base size 3 to ISO 5599-1
Pneumatic connection, port 5	Sub-base size 3 to ISO 5599-1
Material seals	NBR
Material housing	Die-cast aluminium