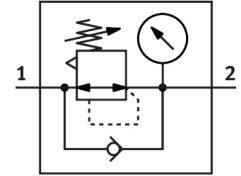


# Pressure regulator VRPA-LM-R18-Q8

Part number: 8086011

FESTO



 General operating condition

## Data sheet

Feature	Value
Controller function	Output pressure constant With secondary venting With return flow function
Pneumatic connection, port 1	R1/8
Pneumatic connection, port 2	QS-8
Type of mounting	Screw-in
Standard nominal flow rate (standardised to DIN 1343)	110 l/min
Ambient temperature	0 °C ... 60 °C
Material housing	PBT
Operating medium	Compressed air to ISO 8573-1:2010 [7:4:4]
Mounting position	optional
Type of actuation	Manual
Type of seal on screwed plug	Coating
Adjustment component	Rotary knob with detent
Symbol	00991558
Rotatability	360°/no continuous swivelling permissible
Pressure gauge (ANALOG) or Pressure display (DIGITAL)	With pressure gauge
Pressure regulation range	0.1 MPa ... 0.8 MPa
Pressure regulation range	1 bar ... 8 bar
Pressure regulation range	14.5 psi ... 116 psi
Note on operating and pilot medium	Lubricated operation possible (in which case lubricated operation will always be required)
LABS (PWIS) conformity	VDMA24364-B2-L
Cleanroom class	Class 4 according to ISO 14644-1
Product weight	31 g
Material screwed plug	Nickel-plated brass
Note on materials	RoHS-compliant
Material thread seal	PTFE
Material static seals	NBR