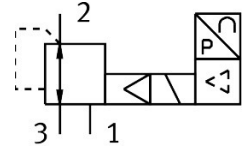


Proportional-pressure regulator VPPM-6F-L-1-F-0L2H-A4N

FESTO

Part number: 542248



General operating condition

Data sheet

Feature	Value
Nominal size, supply	6 mm
Nominal size, exhaust	4,5 mm
Type of actuation	Electric
Sealing principle	Soft
Mounting position	optional
Design	Piloted diaphragm regulator
Short circuit current rating	For all electrical connections
Safety instructions	Safety position VPPM: if the power supply cable is interrupted, output pressure is maintained unregulated.
Symbol	00995303
Reverse polarity protection	For all electrical connections
Type of reset	Mechanical spring
Type of piloting	Pilot actuated
Valve function	3-way proportional pressure regulator
Display type	LED
Pressure regulation range	0.002 MPa ... 0.2 MPa
Pressure regulation range	0.02 bar ... 2 bar
Inlet pressure 1	0 bar ... 4 bar
Inlet pressure 1	0 MPa ... 0.4 MPa
Max. pressure hysteresis	0.01 bar
Standard nominal flow rate (standardised to DIN 1343)	380 l/min
Operational voltage range DC	21.6 V ... 26.4 V
Max. current consumption	300 mA
Duty cycle	100%
Max. electrical power consumption	7 W
Residual ripple	10 %
Switching output	NPN
Signal range analogue output	4 - 20 mA
Signal range analogue input	4 - 20 mA
Operating medium	Compressed air to ISO 8573-1:2010 [7:4:4] Inert gases
Note on operating and pilot medium	Lubricated operation not possible
Approval	RCM trademark c UL us listed (OL)
KC mark	KC-EMV

Feature	Value
CE mark (see declaration of conformity)	To EU EMC Directive In accordance with EU RoHS Directive
CE marking (see declaration of conformity)	To UK instructions for EMC To UK RoHS instructions
Certificate issuing authority	UL E322346
Corrosion resistance class CRC	2 - Moderate corrosion stress
LABS (PWIS) conformity	VDMA24364-B1/B2-L
Media temperature	10 °C ... 50 °C
Degree of protection	IP65
Ambient temperature	0 °C ... 60 °C
Product weight	400 g
Linearity	1 %FS
Hysteresis	0.5 %FS
Reproducibility	0.5 %FS
Total accuracy	1.25%FS
Temperature coefficient	0.04 %/K
Repetition accuracy FS	0.5 %
Electrical connection	8-pin M12 Plugs
Type of mounting	Either: With through-hole With accessories
Pneumatic connection, port 1	Sub-base
Pneumatic connection, port 2	Sub-base
Pneumatic connection, port 3	Sub-base
Note on materials	RoHS-compliant
Material housing	Wrought aluminium alloy Anodised