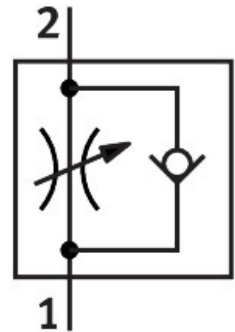


One-way flow control valve CRGRLA-1/4-B

Part number: 161405

FESTO



 [General operating condition](#)

Data sheet

Feature	Value
Valve function	One-way flow control function
Pneumatic connection, port 1	G1/4
Pneumatic connection, port 2	G1/4
Type of actuation	Manual
Adjustment component	Slotted head screw
Type of mounting	Screw-in
Standard nominal flow rate in flow control direction	610 l/min
Standard nominal flow rate in blocked direction	450 l/min ... 820 l/min
Operating pressure	0.03 MPa ... 1 MPa
Operating pressure	0.3 bar ... 10 bar
Operating pressure	4.35 psi ... 145 psi
Ambient temperature	-20 °C ... 80 °C
Maritime classification	See certificate
Explosion protection	The information in the certificate must be observed! Zone 1 (ATEX) Zone 2 (ATEX) Zone 21 (ATEX) Zone 22 (ATEX)
Mounting position	optional
Symbol	00991452
Rotatability	360°/no continuous swivelling permissible
Standard flow rate in flow control direction 0.6->0 MPa (6->0 bar, 87->0 psi)	1265 l/min
Standard flow rate in non-return direction 0.6->0 MPa (6->0 bar, 87->0 psi)	1030 l/min ... 1345 l/min
Operating medium	Compressed air to ISO 8573-1:2010 [7:4:4]
Note on operating and pilot medium	Lubricated operation possible (in which case lubricated operation will always be required)
LABS (PWIS) conformity	VDMA24364-B2-L
Suitability for the production of Li-ion batteries	Metals with more than 1% by mass of copper, zinc or nickel are excluded from use. The exceptions are nickel in steel, chemically nickel-plated surfaces, circuit boards, cables, electrical plug connectors and coils

Feature	Value
Cleanroom class	Class 4 according to ISO 14644-1
Storage temperature	-10 °C ... 40 °C
Suitable for use with food	See supplementary material information
Media temperature	-10 °C ... 60 °C
Nominal size	6 mm
Max. tightening torque	11 Nm
Permissible actuation moment, regulating screw	1.5 Nm
Product weight	71.6 g
Note on materials	RoHS-compliant
Material seals	FPM PVC
Material hollow bolt	High-alloy steel
Material adjusting screw	High-alloy stainless steel
Material swivel fitting	High-alloy stainless steel