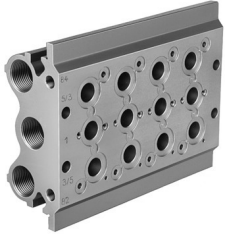


Manifold block PRS-1/4-4-B

Part number: 15863

FESTO



 [General operating condition](#)

Data sheet

| Feature | Value |
|--------------------------------|-------------------|
| Max. number of valve positions | 4 |
| LABS (PWIS) conformity | VDMA24364-B1/B2-L |
| Product weight | 1610 g |
| Type of mounting | With through-hole |
| Pilot exhaust port 82 | G1/8 |
| Pilot exhaust port 84 | G1/8 |
| Pneumatic connection, port 1 | G1/2 |
| Pneumatic connection, port 3 | G1/2 |
| Pneumatic connection, port 5 | G1/2 |
| Note on materials | RoHS-compliant |
| Material sub-base | Aluminium |