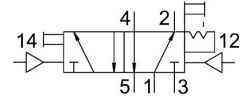


# Pneumatic valve

## JH-5-1/8-EX

Part number: 536035

FESTO



[General operating condition](#)

## Data sheet

| Feature   | Value                                       |
|---|---|
| Valve function  | 5/2 double solenoid                         |
| Type of actuation                                     | Pneumatic                                   |
| Construction width                                    | 26 mm                                       |
| Standard nominal flow rate (standardised to DIN 1343) | 600 l/min                                   |
| pneumatic working port                                | G1/8  |
| Operating pressure                                    | 0 MPa ... 1 MPa                             |
| Operating pressure                                    | 0 bar ... 10 bar                            |
| Design  | Poppet seat                                 |
| Degree of protection                                  | IP65  |
| CE mark (see declaration of conformity)               | To EU Explosion Protection Directive (ATEX) |
| CE marking (see declaration of conformity)            | To UK EX instructions                       |
| ATEX category gas                                     | II 2G                                       |
| ATEX category dust                                    | II 2D                                       |
| Explosion ignition protection type for gas            | Ex h IIC T4 Gb                              |
| Explosion ignition protection type for dust           | Ex h IIIC T130°C Db                         |
| Explosion ambient temperature                         | -10°C                                       |
| Explosion protection certification outside the EU     | EPL Db (GB)<br>EPL Gb (GB)                  |
| Nominal size  | 5 mm  |
| Grid dimension  | 27 mm                                       |
| Exhaust-air function                                  | With flow control option                    |
| Sealing principle                                     | Soft  |
| Mounting position                                     | optional                                    |
| Type of piloting                                      | Direct                                      |
| Pilot air supply                                      | External                                    |
| Flow direction  | Non-reversible                              |
| Symbol  | 00995757                                    |
| lap   | Underlap                                    |
| Pilot pressure  | 0.12 MPa ... 1 MPa                          |
| Pilot pressure  | 1.2 bar ... 10 bar                          |
| Max. switching frequency                              | 12 Hz                                       |
| Switching time reversal                               | 7 ms  |
| Max. positive test pulse with 0 signal                | 2200 µs                                     |
| Max. negative test pulse with 1 signal                | 3700 µs                                     |

| Feature                            | Value   |
|------------------------------------|---|
| Explosion protection               | Zone 1 (ATEX)<br>Zone 1 (UKEX)<br>Zone 2 (ATEX)<br>Zone 21 (ATEX)<br>Zone 21 (UKEX)<br>Zone 22 (ATEX) |
| Operating medium                   | Compressed air to ISO 8573-1:2010 [7:4:4]   |
| Note on operating and pilot medium | Lubricated operation possible (in which case lubricated operation will always be required)            |
| Corrosion resistance class CRC     | 1 - Low corrosion stress  |
| LABS (PWIS) conformity             | VDMA24364-B1/B2-L   |
| Storage temperature                | -20 °C ... 60 °C  |
| Media temperature                  | -10 °C ... 60 °C  |
| Ambient temperature                | -10 °C ... 60 °C  |
| Product weight                     | 330 g   |
| Type of mounting                   | Either:<br>On manifold rail<br>With through-hole  |
| Breather connection                | M5  |
| Pilot air port 12                  | G1/8  |
| Pilot air port 14                  | G1/8  |
| Pneumatic connection, port 1       | G1/8  |
| Pneumatic connection, port 2       | G1/8  |
| Pneumatic connection, port 3       | G1/8  |
| Pneumatic connection, port 4       | G1/8  |
| Pneumatic connection, port 5       | G1/8  |
| Note on materials                  | RoHS-compliant  |
| Material seals                     | NBR<br>TPE-U(PU)  |
| Material housing                   | Die-cast aluminium  |