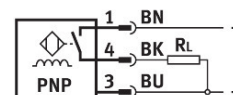
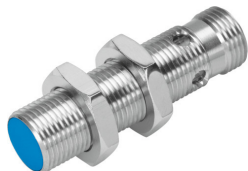


Proximity sensor SIEN-M12B-PS-S-L

Part number: 150403

FESTO



[PDF](#) General operating condition

Data sheet

Feature	Value
Conforms to standard	EN 60947-5-2
Symbol	00991701
Approval	RCM trademark c UL us listed (OL)
CE mark (see declaration of conformity)	To EU EMC Directive
Rated operating distance	2 mm
Assured operating distance	1.62 mm
Reduction factors	Aluminium = 0.4 Stainless steel St 18/8 = 0.6 Copper = 0.3 Brass = 0.5 Steel St 37 = 1.0
Ambient temperature	-25 °C ... 70 °C
Repetition accuracy with constant conditions	0.1 mm
Switching output	PNP
Switching element function	N/O contact
Hysteresis	≤0.18 mm
Max. switching frequency	3000 Hz
Max. output current	200 mA
Voltage drop	≤2 V
Inductive protective circuit	Integrated
Short circuit current rating	Pulsed
Operational voltage range DC	10 V ... 30 V
Residual ripple	± 10%
No-load supply current	≤10 mA
Reverse polarity protection	For all electrical connections
Electrical connection	3-pin M12x1 Plugs
Size	M12x1
Type of mounting	Via lock nut
Mounting type	Flush
Product weight	30 g
Material housing	Brass PBTP Nickel-plated
Switching status indication	Yellow LED
Ambient temperature with moving cable	-5 °C ... 70 °C

Feature	Value
Degree of protection	IP65 IP67
Corrosion resistance class CRC	2 - Moderate corrosion stress
LABS (PWIS) conformity	VDMA24364-B2-L
Additional information for sensor selection	with standard sensing distance
Electrical output	PNP
Selection of sensor design	Standard