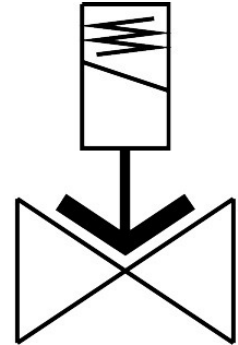


Solenoid valve

VZWF-B-L-M22C-G1-275-2AP4-6

Part number: 1492210

FESTO



[PDF](#) General operating condition

Data sheet

Feature	Value
Design	Diaphragm valve Force pilot operated
Type of actuation	Electric
Sealing principle	Soft
Mounting position	Solenoid vertical
Type of mounting	In-line installation
Connection Process valve	G1
Electrical connection	Type A Plugs To EN 175301-803 Square design
Nominal size	27.5 mm
Valve function	2/2-way, closed, monostable
Manual override	None
Flow direction	Non-reversible
Medium	Compressed air to ISO 8573-1:2010 [7:-:-] Inert gases Mineral oil Water Neutral fluids Other media on request
Nominal pressure PN	40
Pressure difference	0 MPa
Pressure difference	0 bar
Pressure difference	0 psi
Characteristic coil data	110 V AC: 50/60 Hz, pick-up power 19.0 VA, holding power 16.0 VA
Permissible voltage fluctuations	+/- 10 %
Symbol	00992976
Medium pressure	0 MPa ... 0.6 MPa
Medium pressure	0 bar ... 6 bar
Medium pressure	0 psi ... 87 psi
Max. viscosity	22 mm ² /s

Feature	Value
Media temperature	-10 °C ... 80 °C
Ambient temperature	-10 °C ... 35 °C
Leakage rate to EN 12266-1	A
Flow rate Kv	11 m ³ /h
Standard nominal flow rate (standardised to DIN 1343)	11750 l/min
Switching time on	275 ms
Switching time off	290 ms
Note on materials	RoHS-compliant
LABS (PWIS) conformity	VDMA24364 zone III
Material housing	Cast brass
Material number housing	CW617N
Material seals	NBR
Material screws	High-alloy stainless steel
Material number screw	1.4301
Product weight	1500 g
CE mark (see declaration of conformity)	In accordance with EU Pressure Equipment Directive To EU Low Voltage Directive
CE marking (see declaration of conformity)	to UK Pressure Equipment Regulations To UK regulations for electrical equipment
Degree of protection	IP65
Corrosion resistance class CRC	1 - Low corrosion stress