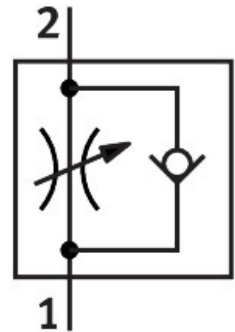


One-way flow control valve GRLA-1/4-B

Part number: 151172

FESTO



 [General operating condition](#)

Data sheet

Feature	Value
Valve function	Exhaust air one-way flow control function
Pneumatic connection, port 1	Female thread G1/4
Pneumatic connection, port 2	Male thread G1/4
Adjustment component	Slotted head screw
Type of mounting	Screw-in
Standard nominal flow rate in flow control direction	610 l/min
Standard nominal flow rate in blocked direction	450 l/min ... 820 l/min
Ambient temperature	-10 °C ... 60 °C
Maritime classification	See certificate
Explosion protection	The information in the certificate must be observed! Zone 1 (ATEX) Zone 2 (ATEX) Zone 21 (ATEX) Zone 22 (ATEX)
Mounting position	optional
Symbol	00991452
Operating pressure complete temperature range	0.3 bar ... 10 bar
Standard flow rate in flow control direction 0.6->0 MPa (6->0 bar, 87->0 psi)	1200 l/min
Standard flow rate in non-return direction 0.6->0 MPa (6->0 bar, 87->0 psi)	885 l/min ... 1615 l/min
Operating medium	Compressed air to ISO 8573-1:2010 [7:4:4]
Note on operating and pilot medium	Lubricated operation possible (in which case lubricated operation will always be required)
LABS (PWIS) conformity	VDMA24364-B1/B2-L
Cleanroom class	Class 4 according to ISO 14644-1
Media temperature	-10 °C ... 60 °C
Nominal size	6 mm
Max. tightening torque	11 Nm
Product weight	59 g
Material screwed plug	Wrought aluminium alloy

Feature	Value
Note on materials	RoHS-compliant
Material seals	NBR
Material adjusting screw	Brass
Material swivel fitting	Die-cast zinc