

Pilot-operated non-return valve, Series NR02

5340051010

Series NR02

- $Q_n = [[300] \text{ l/min}] \dots [[5800] \text{ l/min}]$



Technical data

Industry
Industrial

Compressed air connection 1
G 1/4

Compressed air connection type 1
Internal thread

Mounting
installing in piping

Compressed air connection type 2
External thread

Type
Poppet valve

Compressed air connection 2
R 1/4

Compressed air connection 12
G 1/8

Nominal flow Q_n 1 to 2
1000 l/min

Working pressure min.
3 bar

Working pressure max
10 bar

Min. ambient temperature
-25 °C

Max. ambient temperature
80 °C

Min. medium temperature
-10 °C

Max. medium temperature
60 °C

Medium
Compressed air

Weight
0.132 kg

Material

Housing material

Die cast zinc

Seal material

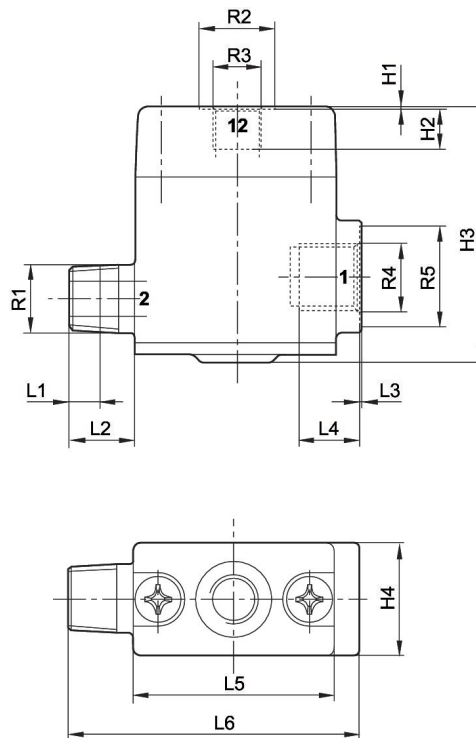
Acrylonitrile butadiene rubber

Part No.

5340051010

Technical information

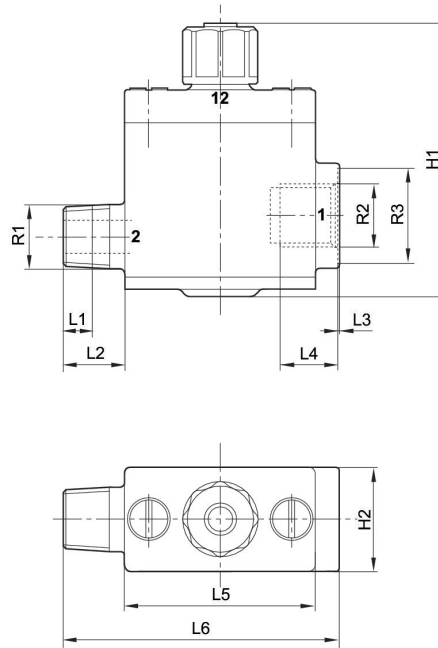
Fig. 3



| | R1 | R2 | R3 | R4 | R5 | L1 | L2 | L3 | L4 |
|------------|------|----|------|------|----|----|----|-----|----|
| 5340051010 | R1/4 | 15 | G1/8 | G1/4 | 20 | 6 | 13 | 0.3 | 12 |

| | L5 | L6 | H1 | H2 | H3 | H4 |
|------------|----|----|-----|----|------|----|
| 5340051010 | 40 | 58 | 0.3 | 8 | 50.5 | 22 |

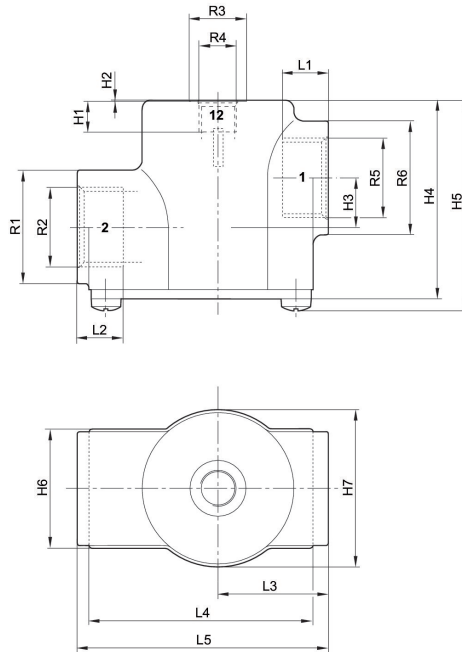
Fig. 2



| | R1 | R2 | R3 | L1 | L2 | L3 | L4 | L5 | L6 |
|------------|------|------|----|----|----|-----|----|----|----|
| 5340051000 | R1/4 | G1/4 | 20 | 6 | 13 | 0.3 | 12 | 40 | 58 |

| | H1 | H2 |
|------------|------|----|
| 5340051000 | 57.5 | 22 |

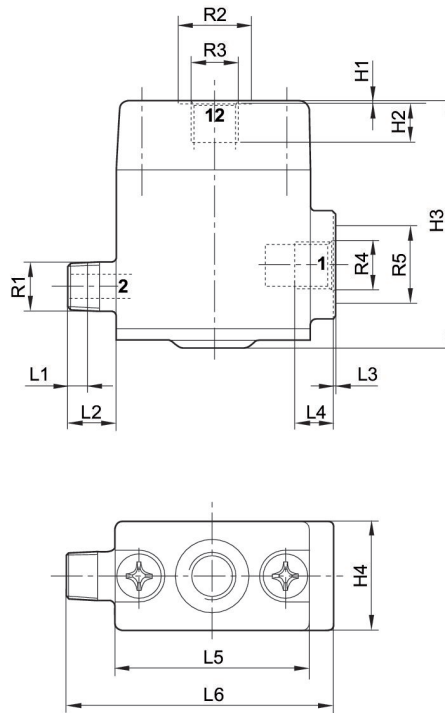
Fig. 4



| | R1 | R2 | R3 | R4 | R5 | R6 | L1 | L2 | L3 |
|------------|----|------|----|------|------|----|----|----|----|
| 5340053000 | 30 | G1/2 | 15 | G1/8 | G1/2 | 30 | 12 | 12 | 29 |

| | L4 | L5 | H1 | H2 | H3 | H4 | H5 | H6 | H7 |
|------------|----|----|----|-----|----|------|----|------|------|
| 5340053000 | 59 | 66 | 8 | 0.3 | 13 | 52.5 | 56 | 31.5 | 41.5 |

Fig. 1



| | R1 | R2 | R3 | R4 | R5 | L1 | L2 | L3 | L4 |
|------------|------|----|------|------|----|----|----|-----|----|
| 5340050010 | R1/8 | 15 | G1/8 | G1/8 | 16 | 4 | 10 | 0.3 | 8 |

| | L5 | L6 | H1 | H2 | H3 | H4 |
|------------|----|----|-----|----|------|----|
| 5340050010 | 40 | 55 | 0.3 | 8 | 50.5 | 22 |