

Series QR2-C-RVT , stainless steel

R412004901

Series QR2-C, stainless steel



Technical data

Industry
Industrial

Fitting type
Elbow fitting

Compressed air connection type
External thread

Port G
G 1/4

Compressed air connection type 2
push-in fitting

Port D
Ø 6

Type
QR2-C-RVT

suitable for use in food processing
suitable for use in food processing

Working pressure min.
-0.95 bar

Working pressure max
16 bar

Min. ambient temperature
-20 °C

Max. ambient temperature
150 °C

Delivery unit
2 piece

Weight
0.024 kg

Material

Housing material
Stainless Steel

Seal material
Fluorocaoutchouc

Material tooth lock washer
Stainless Steel

Material release ring
Stainless Steel

Material thread
Stainless Steel

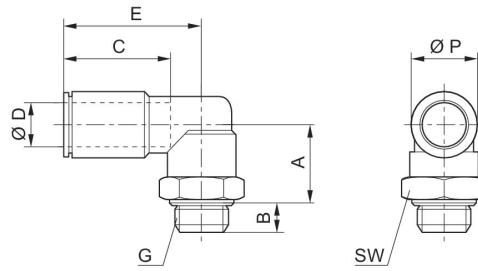
Part No.
R412004901

Technical information

The series QR1 (plastic) and QR2 (metal) can not be combined

Thread seal with captive O-ring

Dimensions



Part No.	Port D	Port G	A	B	C	E	SW	Ø P
R412005617	Ø 4	M5	15	4	15	14.5	9	9
R412026810	Ø 6	M5	16	4	15	14.5	9	9
R412004898	Ø 4	G 1/8	14.5	5.5	15	19.5	13	9
R412004899	Ø 6	G 1/8	16.5	5.5	16	19.5	13	11
R412004900	Ø 8	G 1/8	18.5	5.5	18	19.5	13	13
R412004901	Ø 6	G 1/4	15.5	6.5	16	20.5	16	11
R412005616	Ø 8	G 1/4	17.5	6.5	18	20.5	16	13
R412004902	Ø 10	G 3/8	18.5	7	19	24	21	16
R412004903	Ø 12	G 3/8	21	7	19	26.5	21	19
R412026809	Ø 12	G 1/2	33.5	11	19	28.5	20	19