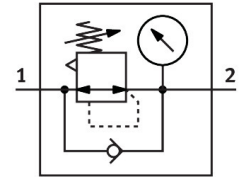


Pressure regulator MS4-LR-1/8-D6-AS

Part number: 529423

FESTO



General operating condition

Data sheet

| Feature | Value |
|---|---|
| Size | 4 |
| Series | MS |
| Actuator lock | Rotary knob with detent can be closed with accessories |
| Mounting position | optional |
| Design | Directly actuated diaphragm regulator |
| Controller function | Output pressure constant With secondary venting With return flow function |
| Symbol | 00991558 |
| Pressure gauge (ANALOG) or Pressure display (DIGITAL) | With pressure gauge |
| Operating pressure | 0.08 MPa ... 1.4 MPa |
| Operating pressure | 0.8 bar ... 14 bar |
| Pressure regulation range | 0.3 bar ... 7 bar |
| Max. pressure hysteresis | 0.025 MPa |
| Max. pressure hysteresis | 0.25 bar |
| Max. pressure hysteresis | 3.625 psi |
| Standard nominal flow rate (standardised to DIN 1343) | 1150 l/min |
| Operating medium | Compressed air to ISO 8573-1:2010 [7:4:4] Inert gases |
| Note on operating and pilot medium | Lubricated operation possible (in which case lubricated operation will always be required) |
| Corrosion resistance class CRC | 2 - Moderate corrosion stress |
| LABS (PWIS) conformity | VDMA24364-B1/B2-L |
| Storage temperature | -10 °C ... 60 °C |
| Suitable for use with food | See supplementary material information |
| Media temperature | -10 °C ... 60 °C |
| Ambient temperature | -10 °C ... 60 °C |
| Product weight | 225 g |
| Type of mounting | Either: Front panel mounting In-line installation With accessories |
| Pneumatic connection, port 1 | G1/8 |
| Pneumatic connection, port 2 | G1/8 |
| Note on materials | RoHS-compliant |

| Feature | Value |
|------------------------|--------------------|
| Material sub-base | Die-cast aluminium |
| Material control panel | PA POM |
| Material seals | NBR |
| Material housing | Die-cast aluminium |
| Material membrane | NBR |