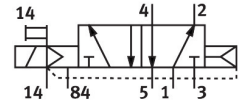


Solenoid valve CPVSC1-M1H-M-P-Q4

Part number: 527560

FESTO



[General operating condition](#)

Data sheet

Feature	Value
Valve function	5/2-way, monostable
Type of actuation	Electric
Valve size	10 mm
Standard nominal flow rate (standardised to DIN 1343)	170 l/min
pneumatic working port	QS-4
Operating voltage	22V DC
Operating pressure	-0.09 MPa ... 0.7 MPa
Operating pressure	-0.9 bar ... 7 bar
Design	Piston gate valve
Type of reset	Pneumatic spring
Degree of protection	IP40
Exhaust-air function	Without flow control option
Sealing principle	Soft
Mounting position	optional
Manual override	Detenting Non-detenting
Type of piloting	Pilot actuated
Pilot air supply	External
Flow direction	Non-reversible
Symbol	00991682
lap	Overlap
Pilot pressure	0.3 MPa ... 0.7 MPa
Pilot pressure	3 bar ... 7 bar
Switching time off	10 ms
Switching time on	10 ms
Max. positive test pulse with 0 signal	400 µs
Max. negative test pulse with 1 signal	200 µs
Characteristic coil data	22 V DC: 1.0 W
Operating medium	Compressed air to ISO 8573-1:2010 [7:4:4]
Note on operating and pilot medium	Lubricated operation possible (in which case lubricated operation will always be required)
Vibration resistance	Transport application test with severity level 2 to FN 942017-4 and EN 60068-2-6
Shock resistance	Shock test with severity level 2 to FN 942017-5 and EN 60068-2-27
Corrosion resistance class CRC	1 - Low corrosion stress
LABS (PWIS) conformity	VDMA24364-B2-L

Feature	Value
Ambient temperature	-5 °C ... 50 °C
Product weight	30.5 g
Electrical connection	2-pin Plugs
Type of mounting	With through-hole
Pilot exhaust port 82/84	Common line
Pneumatic connection, port 1	Common line
Pneumatic connection, port 2	QS-4
Pneumatic connection 3/5 combined	Common line
Pneumatic connection, port 4	QS-4
Note on materials	RoHS-compliant
Material seals	NBR
Material housing	Die-cast aluminium