

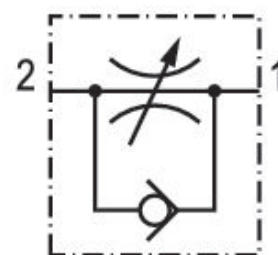
# Check-choke valve, Series CC04

R412007402

## General series information

AVENTICS Series CC04 Check-choke valves

- The AVENTICS Series CC check-choke valves are designed for nominal flows from 70 to 1950 l/min. The different versions are available with a push-in fitting or internal thread.



## Technical data

Industry	Industrial
Port 1	Ø 10
Port 2	Ø 10
Throttle bore Ø	4.5 mm
direction of throttle	2 > 1
Nominal flow Qn 2 to 1	540 l/min
Compressed air connection type 1	push-in fitting
Compressed air connection type 2	pin bushing
Throttle	Exhaust Air Throttling
Medium	Compressed air
Working pressure min.	0.5 bar
Working pressure max	10 bar
Min. ambient temperature	-10 °C

Max. ambient temperature	70 °C
Min. medium temperature	-10 °C
Max. medium temperature	70 °C

## Material

Housing material	Polyamide
Material flow control screw	Brass
Seal material	Acrylonitrile butadiene rubber
Part No.	R412007402

## Technical information

Nominal flow  $Q_n$  at 6 bar and  $\Delta p = 1$  bar

## Dimensions in mm

