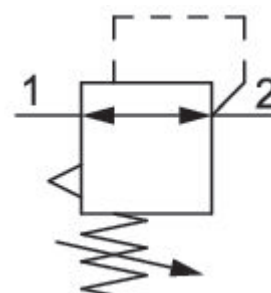


Pressure regulator, Series NL6-RGS

0821302802

General series information AVENTICS Series NL6 Air Preparation Units

- The AVENTICS Series NL maintenance units are suitable for all areas: as individual components or as assembled maintenance units, for centralized or decentralized compressed air preparation, in compact or powerful versions, for use in high or low temperatures. This line offers a complete, customizable compressed air preparation technology. It includes an option to combine every component in the Series to achieve the desired function, making it possible to adjust the components precisely to the application requirements.



Technical data

Industry	Industrial
Function	Standard pressure regulator
Parts	Pressure regulator
Port	G 1
Nominal flow Qn	15000 l/min
Pressure gauge	without pressure gauge
Mounting orientation	Any
Regulator type	Diaphragm-type pressure regulator
Regulation range min.	0.5 bar
Regulation range max.	10 bar
Working pressure min.	0.5 bar
Working pressure max	20 bar

Min. ambient temperature	-10 °C
Max. ambient temperature	60 °C
Activation	Mechanical
Regulator function	with relieving air exhaust
Regulator type	Can be assembled into blocks
Pressure supply	single
Lock type	not lockable
Internal air consumption q_v max.	0.5 l/min
Medium	Compressed air Neutral gases
Recommended pre-filtering	5 μ m
Weight	1.46 kg

Material

Housing material	Die-cast aluminum
Material front plate	Acrylonitrile butadiene styrene
Seal material	Acrylonitrile butadiene rubber
Part No.	0821302802

Technical information

The pressure dew point must be at least 15 °C under ambient and medium temperature and may not exceed 3 °C .

Nominal flow Q_n with secondary pressure $p_2 = 6$ bar at $\Delta p = 1$ bar

The rear pressure gauge connection on the pressure regulator is closed with a blanking plug, the front connection is open. Depending on the customer application, a second blanking plug may be necessary. Please order separately (see accessories).

A change in the flow direction (from air supply on the left to air supply on the right) occurs by rotating installation by 180° about the vertical axis. Please see the operating instructions for further details.

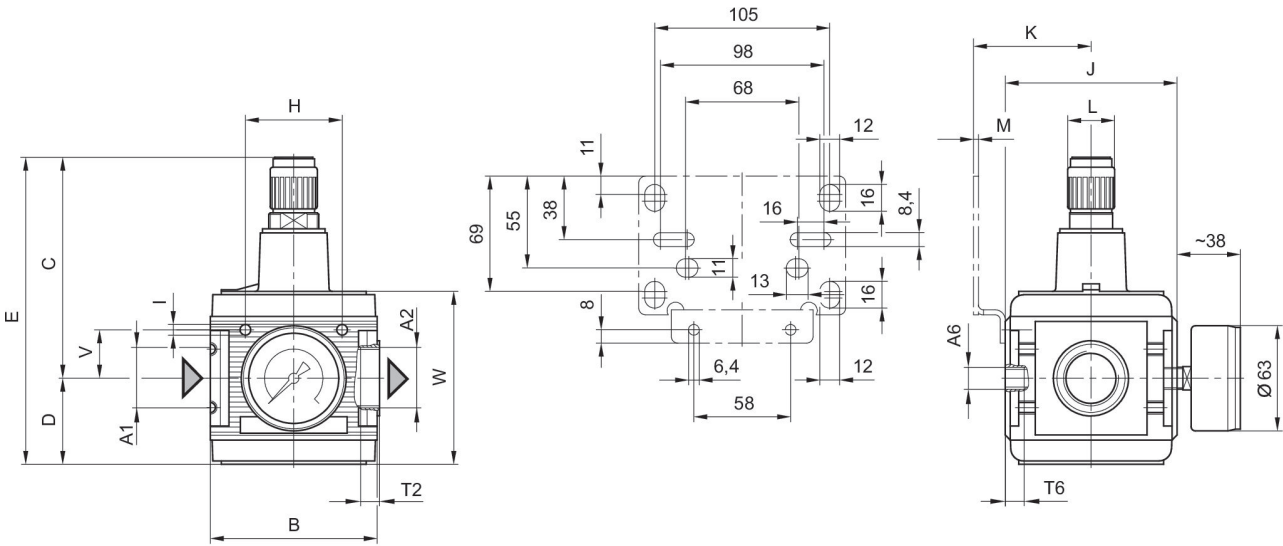
Relieving exhaust (≤ 0.3 bar over set pressure)

With rear exhaust (>3 bar)

Mounting: mounting bracket 1821336017 / block assembly kit 1827009593

Order pressure gauge separately

Dimensions



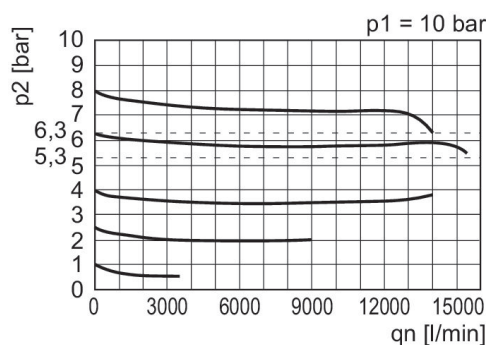
A1 = input
A2 = output
A6 = output

Dimensions in mm

Part No.	A1	A2	A6	B	C	D	E	H	I
0821302801	G 3/4	G 3/4	G 1/4	100	132	51.5	183.5	58	M6
0821302802	G 1	G 1	G 1/4	100	132	51.5	183.5	58	M6
0821302803	G 3/4	G 3/4	G 1/4	100	132	51.5	183.5	58	M6
0821302804	G 3/4	G 1	G 1/4	100	132	51.5	183.5	58	M6

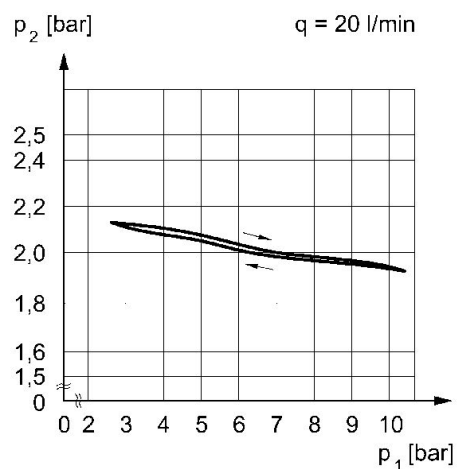
Part No.	J	K	L	M	T2	T6	V	W
0821302801	103	70.5	28	3	18	7	29	103.5
0821302802	103	70.5	28	3	18	7	29	103.5
0821302803	103	70.5	28	3	18	7	29	103.5
0821302804	103	70.5	28	3	18	7	29	103.5

Flow rate characteristic (secondary range p_2 : 0.5 - 10 bar)



p_1 = Working pressure
 p_2 = Secondary pressure
 q_n = Nominal flow

Pressure characteristics curve



p_1 = Working pressure
 p_2 = Secondary pressure
 q = flow rate