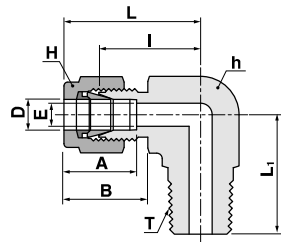


Male Elbow
SLM



Connects fractional tube to female NPT thread

| Part No. | Tube O.D | | T N(NPT) | E Min. | Width across flat | | | | A | B | I | L | L ₁ |
|------------|----------|-------|-------------|-----------|-------------------|-------|-------|-------|-------|-------|-------|--------|----------------|
| | D | | | | h | | H | | | | | | |
| | in | mm | | | in | mm | in | mm | | | | | |
| SLM-1-1N | 1/16 | 1.59 | 1/16 | 1.27 | 7/16 | 11.11 | 5/16 | 7.93 | 8.63 | 10.92 | 15.24 | 19.05 | 17.78 |
| SLM-1-2N | 1/16 | 1.59 | 1/8 | 1.27 | 7/16 | 11.11 | 5/16 | 7.93 | 8.63 | 10.92 | 15.24 | 19.05 | 17.78 |
| SLM-2-2N | 1/8 | 3.17 | 1/8 | 2.28 | 1/2 | 12.70 | 7/16 | 11.11 | 12.70 | 15.24 | 18.30 | 24.91 | 18.90 |
| SLM-2-4N | 1/8 | 3.17 | 1/4 | 2.28 | 1/2 | 12.70 | 7/16 | 11.11 | 12.70 | 15.24 | 18.30 | 24.91 | 23.36 |
| SLM-3-2N | 3/16 | 4.76 | 1/8 | 3.04 | 1/2 | 12.70 | 1/2 | 12.70 | 13.71 | 16.00 | 18.79 | 25.40 | 18.79 |
| SLM-3-4N | 3/16 | 4.76 | 1/4 | 3.04 | 1/2 | 12.70 | 1/2 | 12.70 | 13.71 | 16.00 | 18.79 | 25.40 | 23.36 |
| SLM-4-1N | 1/4 | 6.35 | 1/16 | 4.82 | 1/2 | 12.70 | 9/16 | 14.28 | 15.24 | 17.78 | 19.55 | 26.90 | 18.79 |
| SLM-4-2N | 1/4 | 6.35 | 1/8 | 4.82 | 1/2 | 12.70 | 9/16 | 14.28 | 15.24 | 17.78 | 19.10 | 26.47 | 19.10 |
| SLM-4-4N | 1/4 | 6.35 | 1/4 | 4.82 | 1/2 | 12.70 | 9/16 | 14.28 | 15.24 | 17.78 | 19.81 | 27.18 | 23.87 |
| SLM-4-6N | 1/4 | 6.35 | 3/8 | 4.82 | 11/16 | 17.46 | 9/16 | 14.28 | 15.24 | 17.78 | 22.35 | 29.71 | 26.20 |
| SLM-4-8N | 1/4 | 6.35 | 1/2 | 4.82 | 13/16 | 20.64 | 9/16 | 14.28 | 15.24 | 17.78 | 24.60 | 31.97 | 33.02 |
| SLM-5-2N | 5/16 | 7.93 | 1/8 | 6.35 | 9/16 | 14.28 | 5/8 | 15.87 | 16.25 | 18.54 | 21.33 | 28.70 | 19.81 |
| SLM-5-4N | 5/16 | 7.93 | 1/4 | 6.35 | 9/16 | 14.28 | 5/8 | 15.87 | 16.25 | 18.54 | 21.33 | 29.77 | 24.50 |
| SLM-5-6N | 5/16 | 7.93 | 3/8 | 6.35 | 11/16 | 17.46 | 5/8 | 15.87 | 16.25 | 18.54 | 23.11 | 30.48 | 26.20 |
| SLM-6-2N | 3/8 | 9.52 | 1/8 | 7.11 | 5/8 | 15.87 | 11/16 | 17.46 | 16.76 | 19.30 | 23.11 | 30.48 | 20.60 |
| SLM-6-4N | 3/8 | 9.52 | 1/4 | 7.11 | 5/8 | 15.87 | 11/16 | 17.46 | 16.76 | 19.30 | 23.11 | 30.48 | 25.40 |
| SLM-6-6N | 3/8 | 9.52 | 3/8 | 7.11 | 11/16 | 17.46 | 11/16 | 17.46 | 16.76 | 19.30 | 23.87 | 31.24 | 26.20 |
| SLM-6-8N | 3/8 | 9.52 | 1/2 | 7.11 | 13/16 | 20.64 | 11/16 | 17.46 | 16.76 | 19.30 | 25.90 | 31.42 | 33.02 |
| SLM-6-12N | 3/8 | 9.52 | 3/4 | 7.11 | 1-1/16 | 26.98 | 11/16 | 17.46 | 16.76 | 19.30 | 29.71 | 37.08 | 36.83 |
| SLM-8-4N | 1/2 | 12.70 | 1/4 | 10.41 | 13/16 | 20.64 | 7/8 | 22.22 | 22.86 | 21.84 | 25.90 | 36.06 | 28.30 |
| SLM-8-6N | 1/2 | 12.70 | 3/8 | 10.41 | 13/16 | 20.64 | 7/8 | 22.22 | 22.86 | 21.84 | 25.90 | 36.06 | 28.30 |
| SLM-8-8N | 1/2 | 12.70 | 1/2 | 10.41 | 13/16 | 20.64 | 7/8 | 22.22 | 22.86 | 21.84 | 25.90 | 36.06 | 33.02 |
| SLM-8-12N | 1/2 | 12.70 | 3/4 | 10.41 | 1-1/16 | 26.98 | 7/8 | 22.22 | 22.86 | 21.84 | 29.71 | 39.87 | 36.83 |
| SLM-10-6N | 5/8 | 15.87 | 3/8 | 12.70 | 15/16 | 23.81 | 1 | 25.40 | 24.38 | 21.84 | 28.00 | 37.06 | 30.22 |
| SLM-10-8N | 5/8 | 15.87 | 1/2 | 12.70 | 15/16 | 23.81 | 1 | 25.40 | 24.38 | 21.84 | 28.00 | 37.06 | 35.10 |
| SLM-10-12N | 5/8 | 15.87 | 3/4 | 12.70 | 1-1/16 | 26.98 | 1 | 25.40 | 24.38 | 21.84 | 29.71 | 39.87 | 36.83 |
| SLM-12-8N | 3/4 | 19.05 | 1/2 | 15.74 | 1-1/16 | 26.98 | 1-1/8 | 28.58 | 24.38 | 21.84 | 29.71 | 39.87 | 37.00 |
| SLM-12-12N | 3/4 | 19.05 | 3/4 | 15.74 | 1-1/16 | 26.98 | 1-1/8 | 28.58 | 24.38 | 21.84 | 29.71 | 39.87 | 36.83 |
| SLM-14-12N | 7/8 | 22.22 | 3/4 | 18.28 | 1-1/4 | 31.75 | 1-1/4 | 31.75 | 25.90 | 21.84 | 34.54 | 44.70 | 41.65 |
| SLM-16-12N | 1 | 25.40 | 3/4 | 22.35 | 1-3/8 | 34.92 | 1-1/2 | 38.10 | 31.24 | 26.41 | 36.83 | 49.02 | 42.20 |
| SLM-16-16N | 1 | 25.40 | 1 | 22.35 | 1-3/8 | 34.92 | 1-1/2 | 38.10 | 31.24 | 26.41 | 36.83 | 49.02 | 49.70 |
| SLM-20-20N | 1-1/4 | 31.75 | 1-1/4 | 27.68 | 1-11/16 | 42.86 | 1-7/8 | 47.63 | 41.14 | 38.86 | 44.50 | 66.54 | 49.75 |
| SLM-24-24N | 1-1/2 | 38.10 | 1-1/2 | 34.03 | 2 | 50.80 | 2-1/4 | 57.15 | 50.03 | 45.21 | 50.80 | 77.97 | 60.45 |
| SLM-32-32N | 2 | 50.80 | 2 | 45.97 | 2-3/4 | 69.82 | 3 | 76.20 | 67.56 | 62.54 | 69.80 | 107.18 | 70.61 |