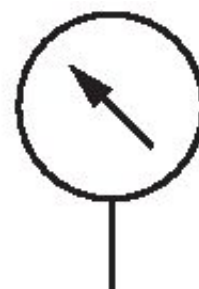


Pressure gauge, Series PG1-SAS

R412004418

General series information Series PG1 Pressure gauges

- With the AVENTICS Series PG1 you can visualize and rely on a clear air pressure display for each of your pneumatic circuits. In addition to the parameters for controlling the air quality, supplying sufficient pressure is the basis for operating a reliable system within machine automation. Emerson offers mechanical pressure gauges that can be integrated into machines for diverse applications and air preparation systems. The specifications of the individual versions in the universal PG1 Series provide a selection of options, such as appearance, material, or the required type of mounting.



Technical data

Industry

Pressure gauge version

Standardization

ATEX

Class

Compressed air connection

Nominal diameter

Scale value

Range of application min.

Range of application max.

Display range min.

Industrial

Bourdon tube pressure gauge

Back port

EN 837-1

Suitable for ATEX

2,5

G 1/4

50 mm

0.5

0 bar

12 bar

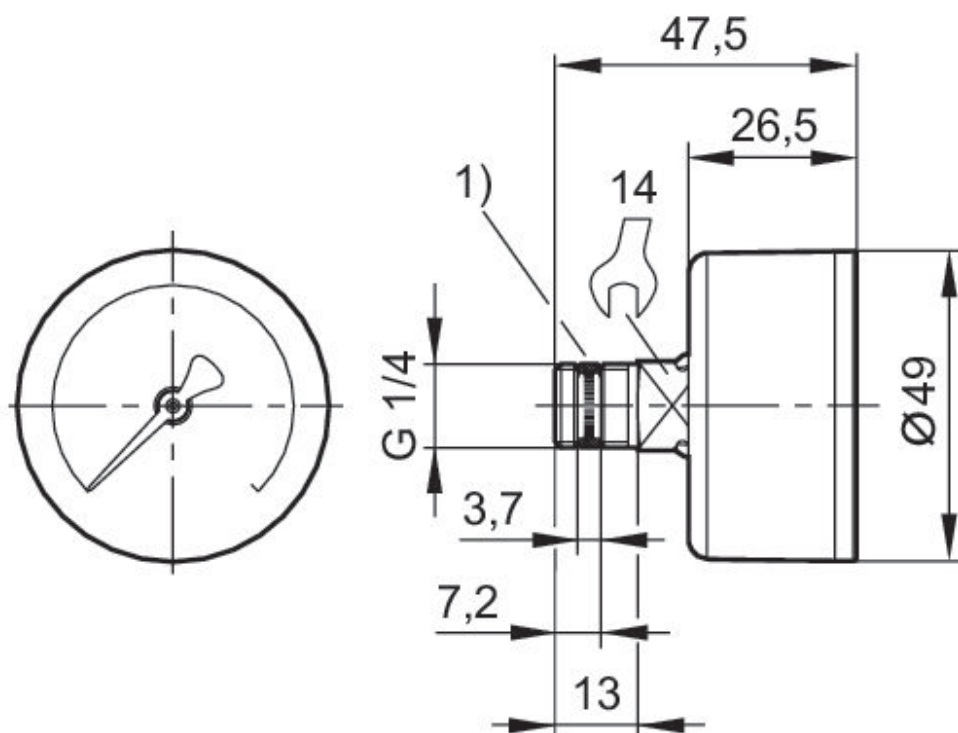
0 bar

Display range max.	16 bar
Working pressure min.	0 bar
Working pressure max	16 bar
Min. ambient temperature	-40 °C
Max. ambient temperature	60 °C
Medium	Compressed air
Background color	Black
Main scale unit (outside)	bar
Main scale color (outside)	White
Secondary scale unit (inside)	psi
Secondary scale color (inside)	Grey
Pointer color	White
Weight	0.09 kg

Material

Housing material	Acrylonitrile butadiene styrene
Material viewing window	Polystyrene
Material thread	Brass
Seal material	Polytetrafluorethylene
	R412004418

Dimensions in mm



1) Gasket thread