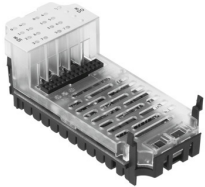


Input/output module CPX-8DE-8DA

Part number: 526257

FESTO



 General operating condition

Data sheet

Feature	Value
Dimensions (W x L x H)	(incl. interlinking block and connection technology) 50 x 107 x 50 mm
Product weight	48 g
Ambient temperature	-5 °C ... 50 °C
Storage temperature	-20 °C ... 70 °C
Degree of protection	Dependent on the manifold block
Corrosion resistance class CRC	1 - Low corrosion stress (when installed)
LABS (PWIS) conformity	VDMA24364-B2-L
Material housing	PA-reinforced PC
LED display	1 Group diagnostics 16 Channel status
Diagnosis	Short circuit/overload per channel Undervoltage of outputs
Number of outputs	8
Parameterisation	Input debounce time Fail-safe per channel Forcing per channel Idle mode per channel Signal extension time Behaviour after short circuit Module monitoring
Operational voltage range DC	18 V ... 30 V
Nominal operating voltage DC	24 V
Intern power consumption nominal operating voltage	Typ. 22 mA
Number of inputs	8
Characteristic for inputs	IEC1131-T2
Input debounce time	3 ms (0.1 ms, 10 ms, 20 ms, parameterisable)
Max. residual current of inputs per module	0.7 A
Characteristic for outputs	IEC1131-T2
Switching logic for outputs	PNP (positive switching)
Max. residual current outputs per module	4 A
Max. power supply per channel	0.5 A (12 W lamp load)
Isolation channel - channel	no
Isolation channel - internal bus	Outputs - yes, when using an intermediate air supply
Fuse protection (short circuit)	Internal electronic fuse per channel