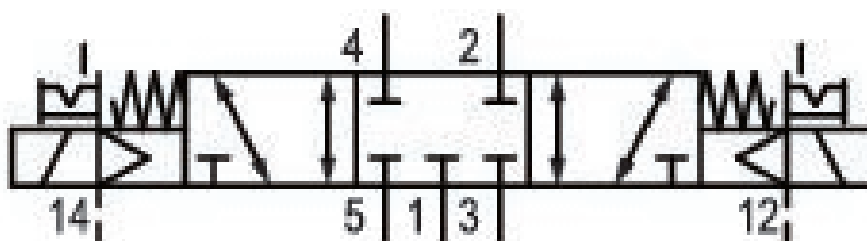
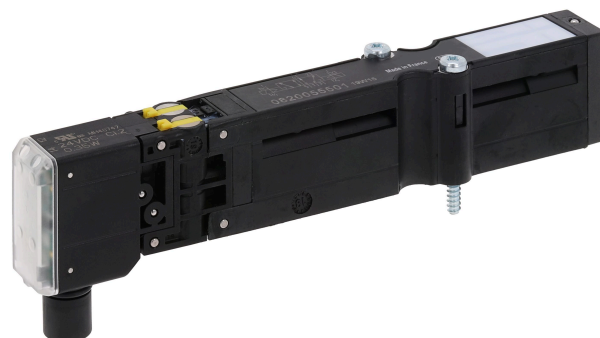


5/3-directional valve, Series HF03-LG

0820055601

General series information
Series HF03-LG

- The AVENTICS Series HF03-LG valve system is ideal for a variety of applications. It is versatile due to its wide connectivity and modularity.



Technical data

Industry
Industrial

Activation
Electrically

Nominal flow Q_n
850 l/min

Switching principle
5/3

Version
Closed Center

Working pressure min.
-0.9 bar

Working pressure max
10 bar

Operational voltage
24 V DC

DC operating voltage
24 V

Voltage tolerance DC
-15% / +20%

Manual override
with detent

Sealing principle
Soft Seal

Pilot
External

Certificates
UR (Underwriters Laboratories)

Pilot valve width
16 mm
Valve type
Spool valve, positive overlapping

Connection type
Plate connection
Blocking principle
Single base plate principle

Control pressure min.
3 bar
Control pressure max.
10 bar
Min. ambient temperature
0 °C
Max. ambient temperature
50 °C
Min. medium temperature
0 °C

Max. medium temperature
50 °C
Medium
Compressed air
Max. particle size
5 µm
Oil content of compressed air min.
0 mg/m³
Oil content of compressed air max.
5 mg/m³

Pilot control exhaust
With collective pilot air exhaust
Flow conductance b
0.23

Flow conductance C
2.79 l/(s*bar)

Power consumption DC
0.35 W
LED status display
Yellow
Duty cycle
100 %

Typ. switch-on time
14 ms
Typ. switch-off time
15 ms

Pilot valve width
16 mm
Protection class with connection
IP65
Protective circuit
Z-diode
Reverse polarity protection
Protected against polarity reversal

mounting screws
cross recessed DIN EN ISO 4757-Z1
Mounting screw tightening torque
1.3 Nm
Weight
0.082 kg

Material

Housing material
Polyamide fiber-glass reinforced
Seal material
Acrylonitrile butadiene rubber

Part No.
0820055601

Technical information

The pilot type (external/internal) is not implemented in the valve, but in the end plate of the valve system.

The pilot valve is UL (Underwriters Laboratories) certified.

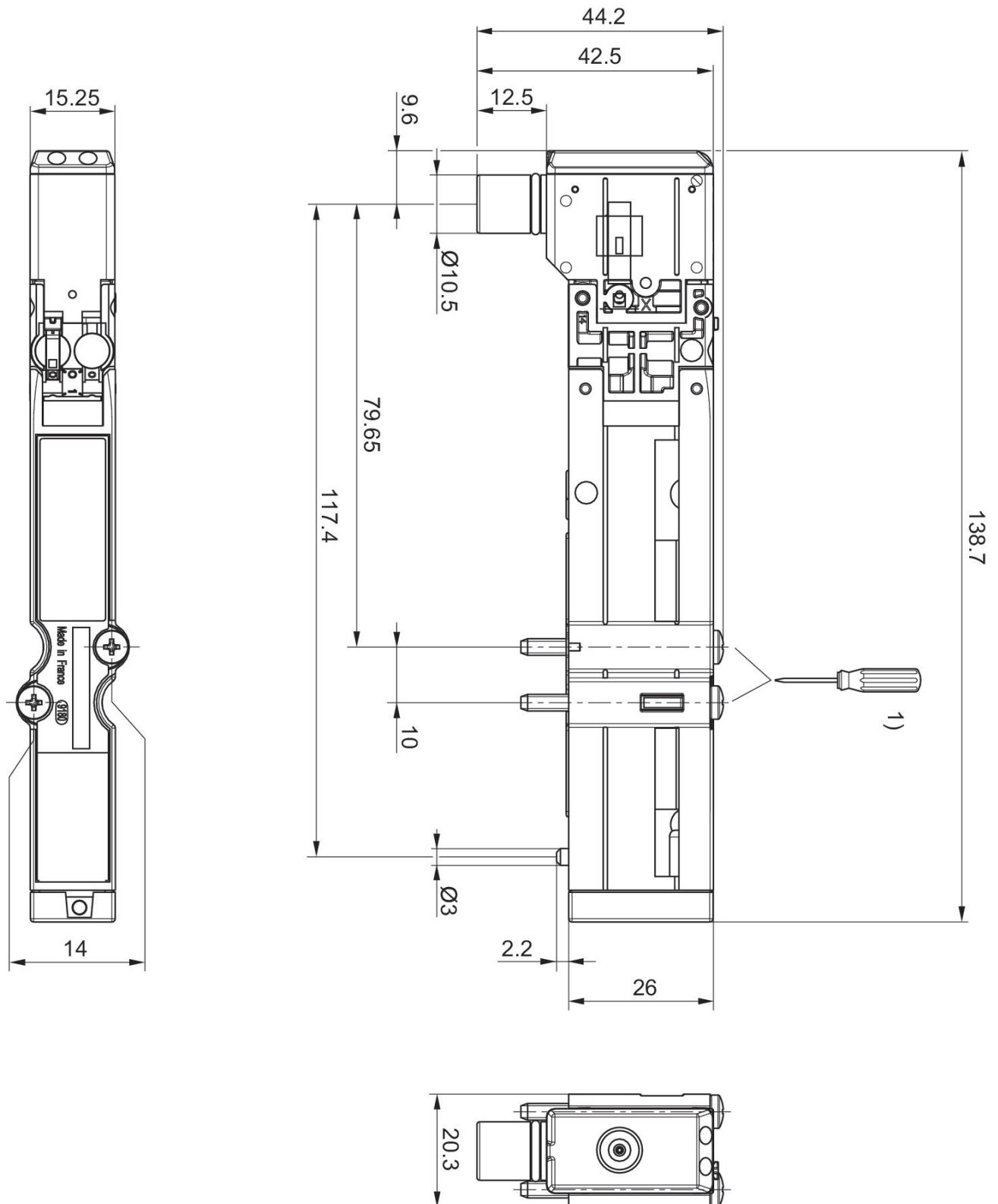
The min. control pressure must be adhered to, since otherwise faulty switching and valve failure may result!

The pressure dew point must be at least 15 °C under ambient and medium temperature and may not exceed 3 °C .

The oil content of compressed air must remain constant during the life cycle.

Use only the approved oils from AVENTICS. Further information can be found in the “Technical information” document (available in <https://www.emerson.com/en-us/support>).

Dimensions



1) = 1.1 +0.2 Nm 800tr/min. max.