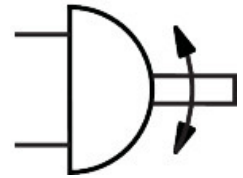
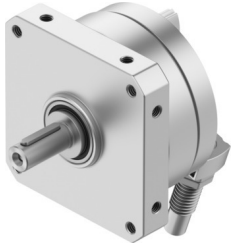


# Semi-rotary drive DSM-16-270-CC-A-B

Part number: 547576

FESTO



 General operating condition

## Data sheet

Feature	Value
Size	16
Cushioning angle	12 deg
Rotation angle adjustment range	0 deg ... 246 deg
Swivel angle	0 deg ... 246 deg
Cushioning	Shock absorber at both ends
Mounting position	optional
Fine adjustment	-3 deg
Mode of operation	Double-acting
Design	Vane
Position detection	Via proximity switch
Symbol	00991265
Operating pressure	0.18 MPa ... 1 MPa
Operating pressure	1.8 bar ... 10 bar
Max. swivel frequency at 0.6 MPa (6 bar, 87 psi)	1 Hz
Operating medium	Compressed air to ISO 8573-1:2010 [7::-:]
Corrosion resistance class CRC	0 - No corrosion stress
LABS (PWIS) conformity	VDMA24364-B1/B2-L
Ambient temperature	-10 °C ... 60 °C
Max. axial force	30 N
Max. radial force	75 N
Theoretical torque at 0.6 MPa (6 bar, 87 psi)	2.5 Nm
Permissible mass moment of inertia	0.02 kgm <sup>2</sup>
Product weight	285 g
Type of mounting	Via female thread
Pneumatic connection	M5
Note on materials	RoHS-compliant
Material drive shaft	Steel Nickel-plated
Material seals	TPE-U(PU)
Material housing	Wrought aluminium alloy