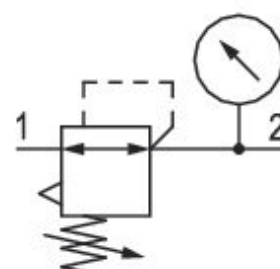


Pressure regulator, Series AS2-RGS

R412006119

General series information Series AS2

- The AVENTICS Series AS2 is a modular, versatile maintenance unit for universal application. This Series offers compact dimensions, is highly efficient, lightweight and easy-to-use. The AVENTICS Series AS guarantees reliability, safety, and efficiency with a simplified assembly and maintenance efforts.



Technical data

Industry

Industrial

Function

Standard pressure regulator

Parts

Pressure regulator

Port

G 3/8

Nominal flow Qn

2700 l/min

Pressure gauge

with pressure gauge

Mounting orientation

Any

Regulator type

Diaphragm-type pressure regulator

Regulation range min.

0.5 bar

Regulation range max.

8 bar

Working pressure min.

0.5 bar

Working pressure max

16 bar

Min. ambient temperature

-10 °C

Max. ambient temperature

50 °C

Activation

Mechanical

Regulator function

with relieving air exhaust

Regulator type

Can be assembled into blocks

Pressure supply

single

Lock type

for padlocks

Medium

Compressed air

Neutral gases

Weight

0.32 kg

Material

Housing material

Polyamide

Material front plate

Acrylonitrile butadiene styrene

Seal material

Acrylonitrile butadiene rubber

Material threaded bushing

Die cast zinc

Part No.

R412006119

Technical information

The pressure dew point must be at least 15 °C under ambient and medium temperature and may not exceed 3 °C .

The rear pressure gauge connection on the pressure regulator is closed with a blanking plug, the front connection is open. Depending on the customer application, a second blanking plug may be necessary. Please order separately (see accessories).

Nominal flow Qn with secondary pressure p2 = 6 bar at $\Delta p = 1$ bar

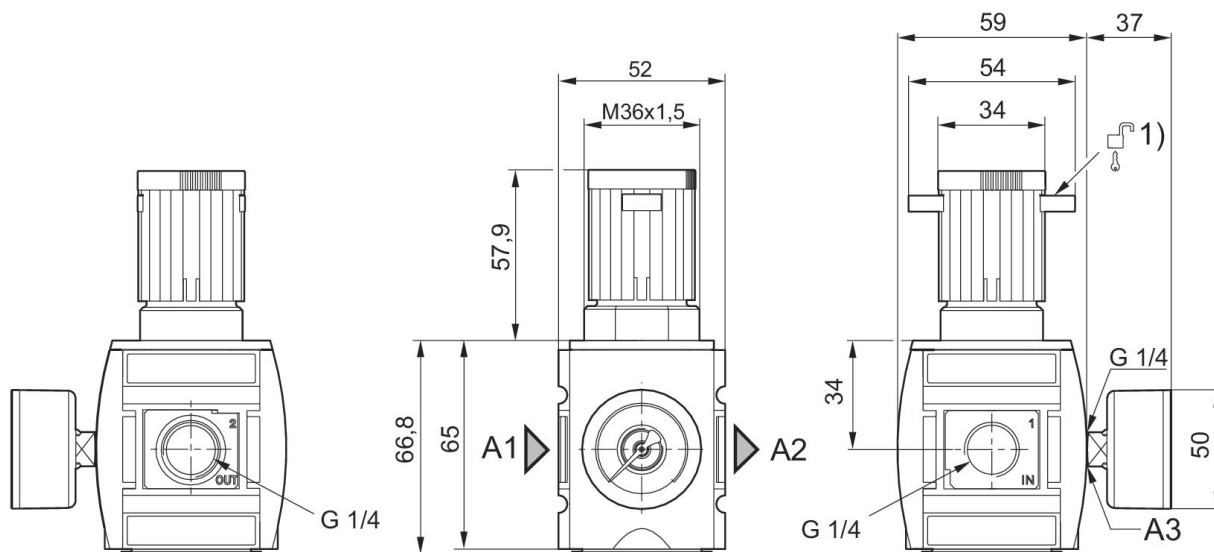
A change in the flow direction (from air supply on the left to air supply on the right) occurs by rotating installation by 180° about the vertical axis. Please see the operating instructions for further details.

Relieving exhaust (≤ 0.3 bar over set pressure)

Pressure gauge enclosed separately

With rear exhaust (>3 bar)

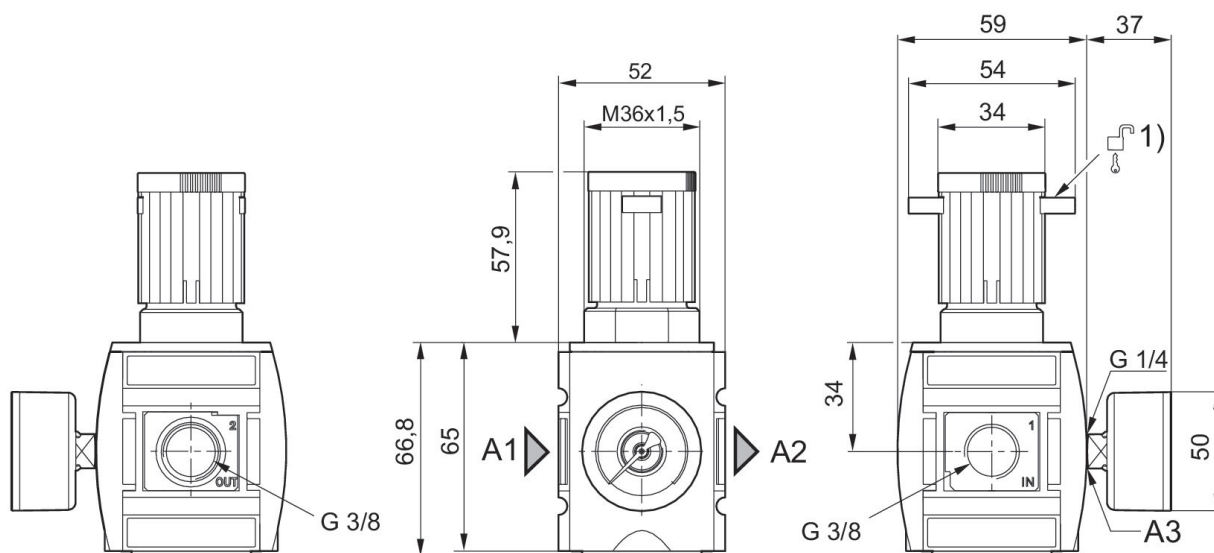
Dimensions in mm



A1 = input A2 = output
A3 = pressure gauge connection
1) Mounting option for padlocks, max. shackle Ø 8

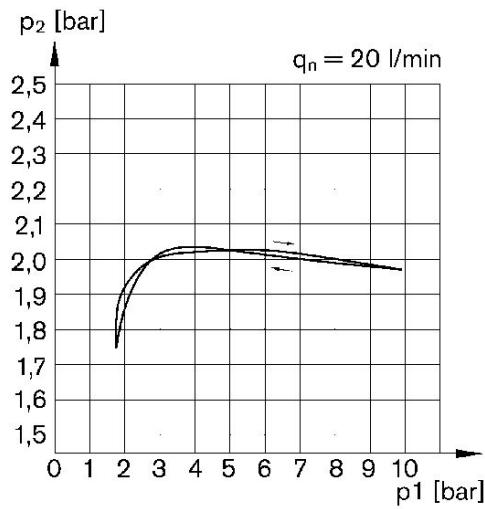
Dimensions in mm

Fig. 2



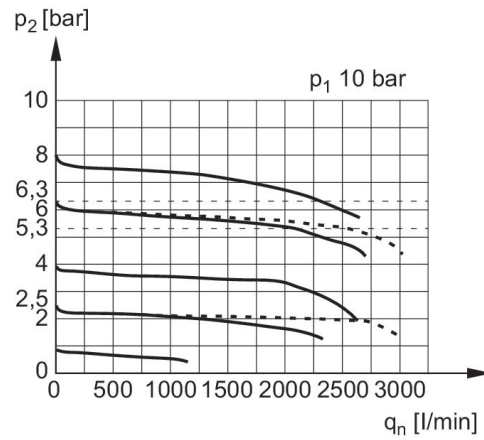
A1 = input A2 = output
A3 = pressure gauge connection
1) Mounting option for padlocks, max. shackle Ø 8

Pressure characteristics curve Standard version



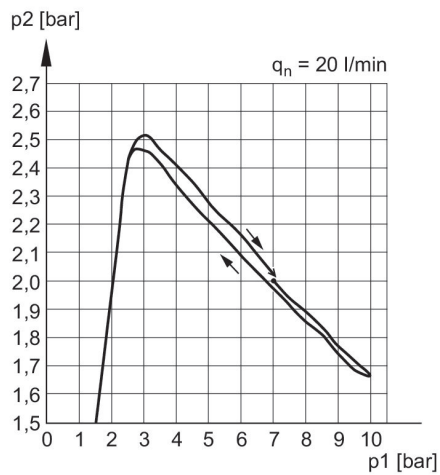
p1 = Working pressure p2 = Secondary pressure qn = Nominal flow

Flow rate characteristic (p2: 0,5 - 8 bar)



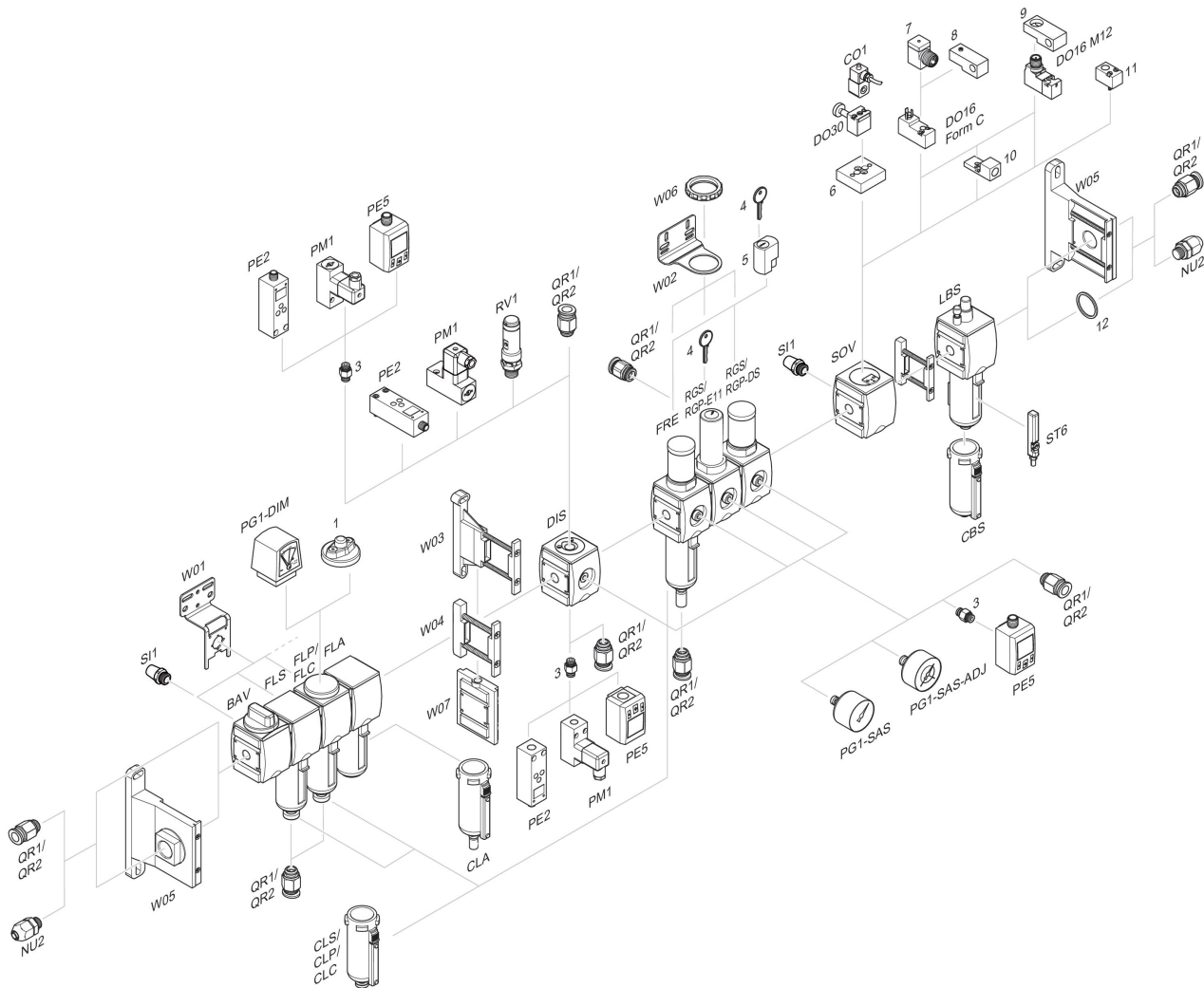
p1 = Working pressure p2 = Secondary pressure qn = Nominal flow

Pressure characteristics curve Version with safe rear exhaust in case of drop (removal) of pilot pressure



p1 = Working pressure p2 = Secondary pressure qn = Nominal flow

Accessories overview



1 = contamination display 3 = Double nipple 4 = Key for E11 locking 5 = mortise lock 6 = Transition plate DO30 7 = Adapter, Series CON-VP 8 = Mounting aid DO16, form C 9 = Mounting aid DO16, M12 10 = Adapter for external pilot air 11 = Adapter pneumatic operation 12 = Sealing ring