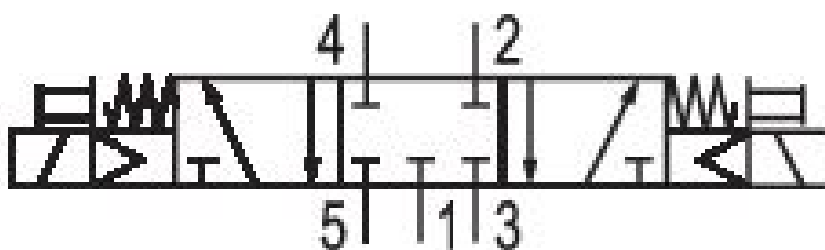


# 5/3-directional valve, Series TC15

0820059103

Series TC15 - inch

■  $Q_n = [1100 \text{ l/min}] \dots [1500 \text{ l/min}]$



## Technical data

Industry  
Industrial

Activation  
Electrically

Nominal flow  $Q_n$   
1300 l/min

Switching principle  
5/3

Version  
Closed Center

Compressed air connection output  
G 1/4

Working pressure min.  
3 bar

Working pressure max  
10 bar

Operational voltage AC at 50 Hz  
230 V

Operational voltage AC at 60 Hz  
230 V

Voltage tolerance AC 50 Hz  
-10% / +10%

Voltage tolerance AC 60 Hz  
-10% / +10%

Manual override  
without detent

Electrical connection type  
Plug

Electrical connection size  
ISO 15217, form C

Actuating control  
Double Solenoid

Pilot valve width  
15 mm

Valve type  
Spool valve, positive overlapping

Control pressure min.  
3 bar

Control pressure max.  
10 bar

Min. ambient temperature  
-10 °C

Max. ambient temperature  
50 °C

Min. medium temperature  
-10 °C

Compressed air connection input  
G 1/4

Compressed air connection, exhaust  
G 1/4

Holding power AC 50 Hz  
1.6 VA

Holding power AC 60 Hz  
1.4 VA

Switch-on power AC 50 Hz  
2.2 VA

Switch-on power AC 60 Hz  
2 VA

Nominal resistance  
14700 Ω

Pilot valve width  
15 mm

Connector standard  
ISO 15217

Protection class with connection  
IP65

Housing material  
Polyamide fiber-glass reinforced

Sealing principle  
Soft Seal

Pilot  
Internal

Connection type  
Pipe connection

Max. medium temperature  
50 °C

Medium  
Compressed air

Max. particle size  
5 µm

Oil content of compressed air min.  
0 mg/m<sup>3</sup>

Oil content of compressed air max.  
5 mg/m<sup>3</sup>

Flow conductance b  
0.31

Flow conductance C  
5.9 l/(s\*bar)

Duty cycle  
100 %

Typ. switch-on time  
12 ms

Typ. switch-off time  
13 ms

Generic emission standard in accordance with  
EN 50081:1992

Mounting on manifold strip  
P-strip

Mounting screw tightening torque  
2.5 Nm

Weight  
0.278 kg

Seal material  
Acrylonitrile butadiene rubber  
Hydrogenated nitrile butadiene rubber

Material threaded bushing  
Brass  
Die cast zinc

Material front plate  
Polyamide fiber-glass reinforced  
Part No.  
0820059103

## Technical information

The min. control pressure must be adhered to, since otherwise faulty switching and valve failure may result!

The pressure dew point must be at least 15 °C under ambient and medium temperature and may not exceed 3 °C .

The oil content of compressed air must remain constant during the life cycle.

Use only the approved oils from AVENTICS. Further information can be found in the “Technical information” document (available in <https://www.emerson.com/en-us/support>).

