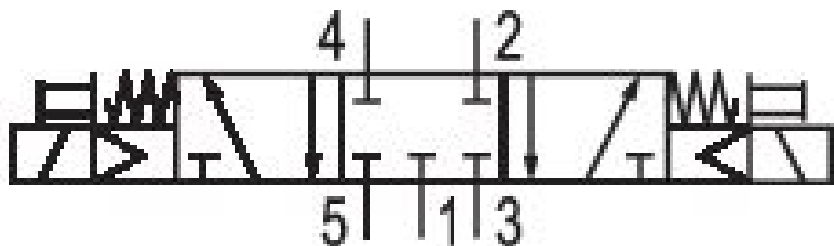


5/3-directional valve, Series TC15

0820059101

General series information
Series TC15

- The AVENTICS Series TC08/TC15 includes a wide range of spool valves with housings made of high-performance polymers with robust and flexible metal inserts. It is designed for flow rate performances from 800 to 1500 l/min. These directional valves are easy to assemble, making them ideal for applications requiring the highest efficiency in limited spaces.



Technical data

Industry
Industrial

Activation
Electrically

Nominal flow Q_n
1300 l/min

Switching principle
5/3

Version
Closed Center

Compressed air connection output
G 1/4

Working pressure min.
3 bar

Working pressure max
10 bar

DC operating voltage
24 V

Voltage tolerance DC
-10% / +10%

Manual override
without detent

Electrical connection type
Plug

Electrical connection size
ISO 15217, form C

Actuating control
Double Solenoid

Sealing principle
Soft Seal

Pilot
Internal

Pilot valve width
15 mm

Connection type
Pipe connection

Valve type
Spool valve, positive overlapping

Control pressure min.
3 bar

Max. medium temperature
50 °C

Control pressure max.
10 bar

Medium
Compressed air

Min. ambient temperature
-10 °C

Max. particle size
5 µm

Max. ambient temperature
50 °C

Oil content of compressed air min.
0 mg/m³

Min. medium temperature
-10 °C

Oil content of compressed air max.
5 mg/m³

Compressed air connection input
G 1/4

Flow conductance b
0.31

Compressed air connection, exhaust
G 1/4

Flow conductance C
5.9 l/(s*bar)

Power consumption DC
2 W

Typ. switch-on time
12 ms

Nominal resistance
280 Ω

Typ. switch-off time
13 ms

Duty cycle
100 %

Pilot valve width
15 mm

Mounting on manifold strip
P-strip

Connector standard
ISO 15217

Mounting screw tightening torque
2.5 Nm

Protection class with connection
IP65

Weight
0.278 kg

Housing material
Polyamide fiber-glass reinforced

Die cast zinc

Seal material
Acrylonitrile butadiene rubber
Hydrogenated nitrile butadiene rubber

Material front plate
Polyamide fiber-glass reinforced

Material threaded bushing
Brass

Part No.
0820059101

Technical information

The min. control pressure must be adhered to, since otherwise faulty switching and valve failure may result!

The pressure dew point must be at least 15 °C under ambient and medium temperature and may not exceed 3 °C .

The oil content of compressed air must remain constant during the life cycle.

Use only the approved oils from AVENTICS. Further information can be found in the “Technical information” document (available in <https://www.emerson.com/en-us/support>).

Dimensions

