

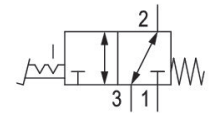
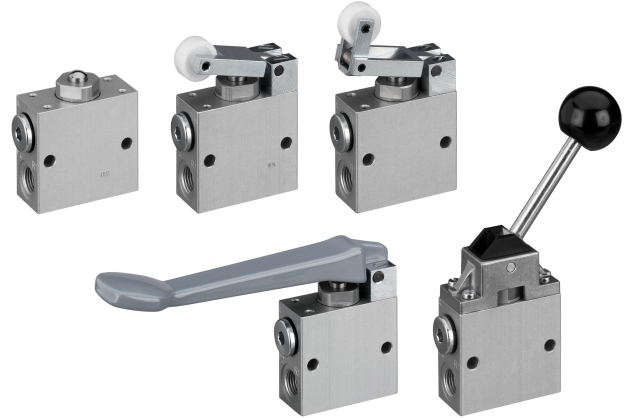
3/2-directional valve, Series AP

2023-11-27

0820400008

Series AP - inch

Qn = [[150 ... 250] l/min]



Technical data

Industry

Industrial

Activation

Mechanical

Valve type

Poppet valve

Plate connection

Pipe connection

Actuating element

Pedal, with detent

Compressed air connection type

Internal thread

Compressed air connection input

G 1/4

Compressed air connection output

G 1/4

Compressed air connection, exhaust

G 1/4

Nominal flow Qn

550 l/min

Min. working pressure

0 bar

Max. working pressure

10 bar

Min. ambient temperature

-30 °C

Max. ambient temperature

80 °C

Min. medium temperature

-30 °C

Max. medium temperature

80 °C

Medium

Compressed air

Min. oil content of compressed air

0 mg/m³

3/2-directional valve, Series AP

2023-11-27

0820400008

Max. oil content of compressed air 5 mg/m³

Max. particle size 5 µm

Weight 1.22 kg

Material

Housing material Aluminum

Seal material Acrylonitrile butadiene rubber

Material actuating control Aluminum

Part No. 0820400008

Technical information

Sound pressure level measured at 6 bar at 1 m distance

The min. control pressure must be adhered to, since otherwise faulty switching and valve failure may result!

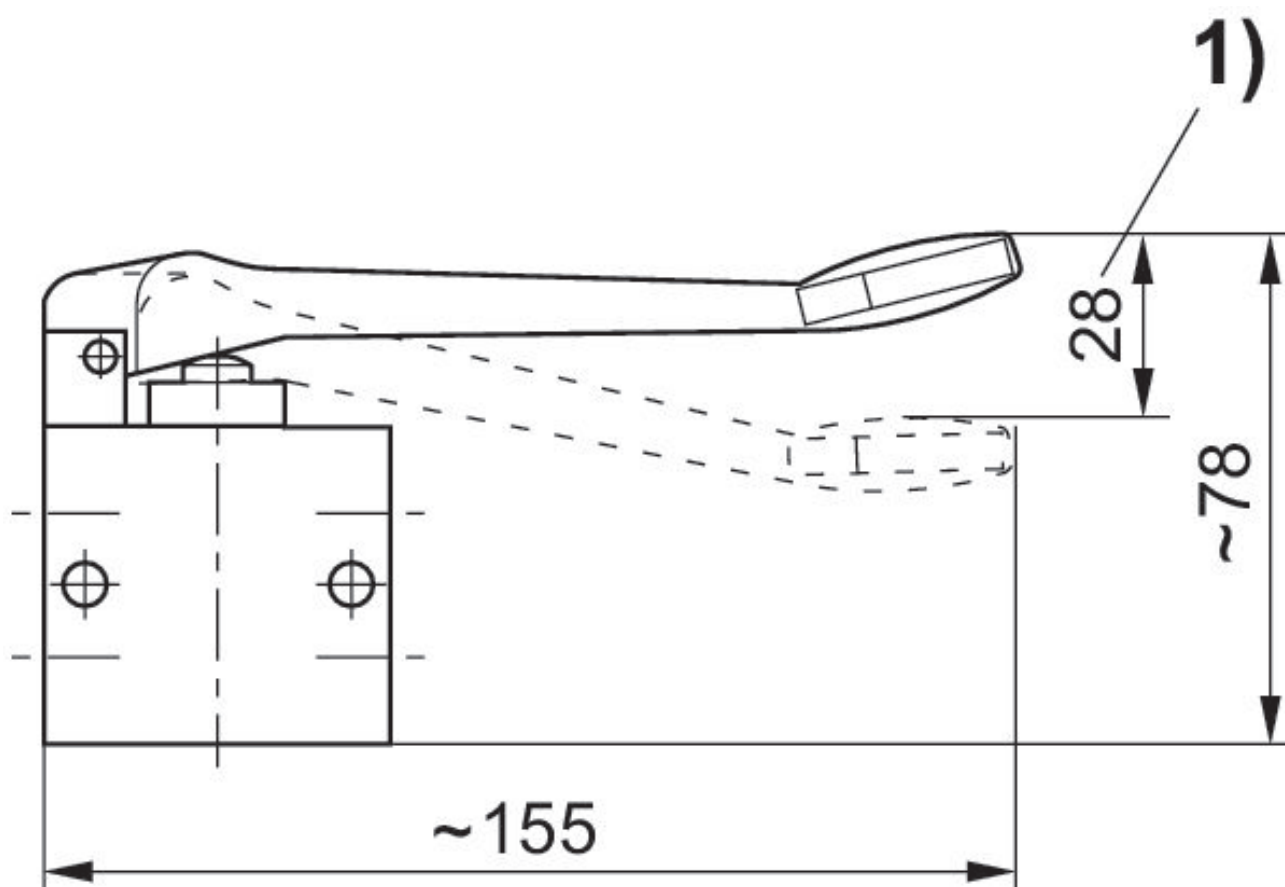
The pressure dew point must be at least 15 °C less than ambient and medium temperature and may not exceed 3 °C.

The oil content of compressed air must remain constant during the life cycle.

Use only the approved oils from AVENTICS. Further information can be found in the "Technical information" document (available in <https://www.emerson.com/en-us/support>).

Dimensions

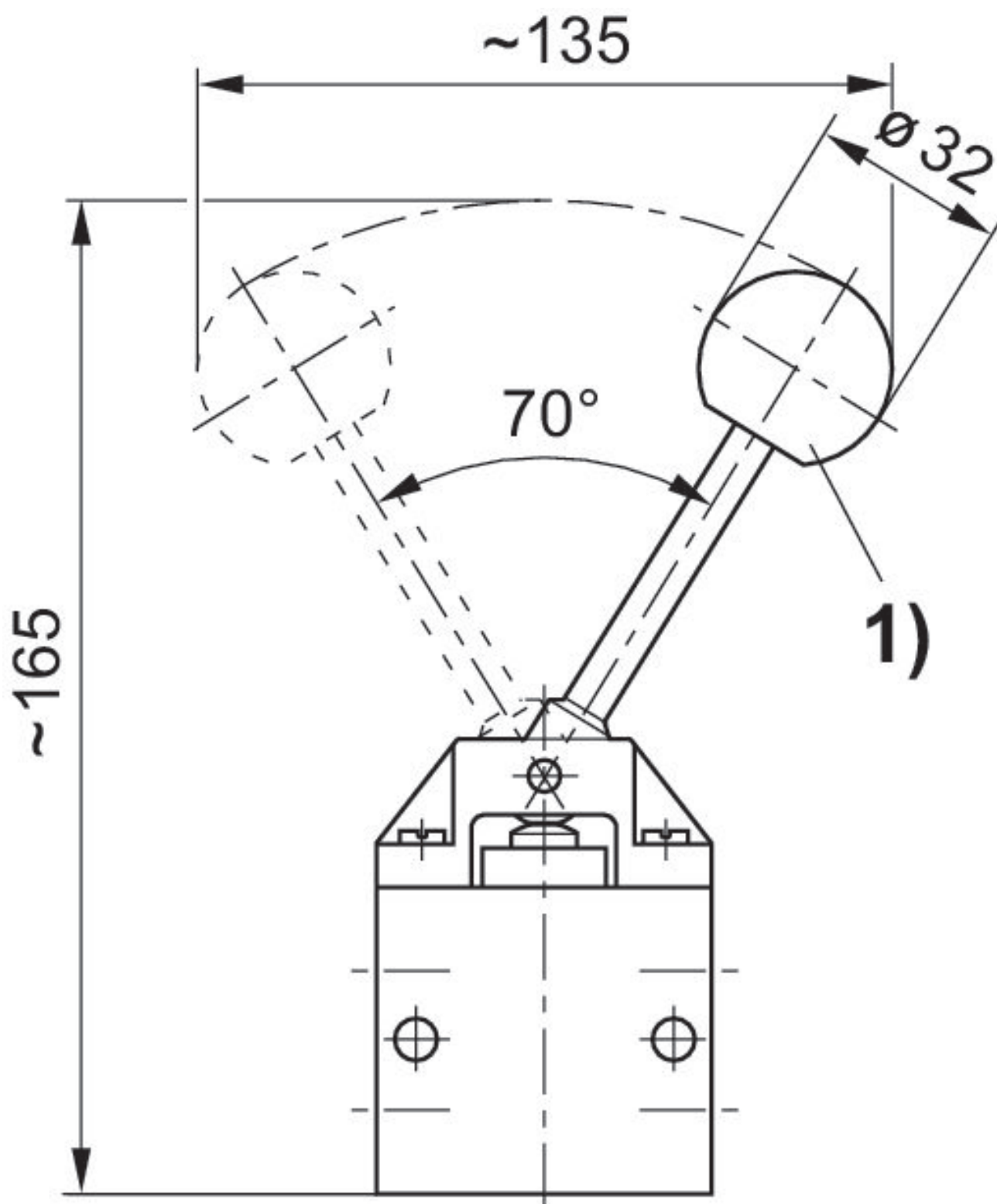
Fig. 4



1) actuating stroke

Dimensions

Fig. 5

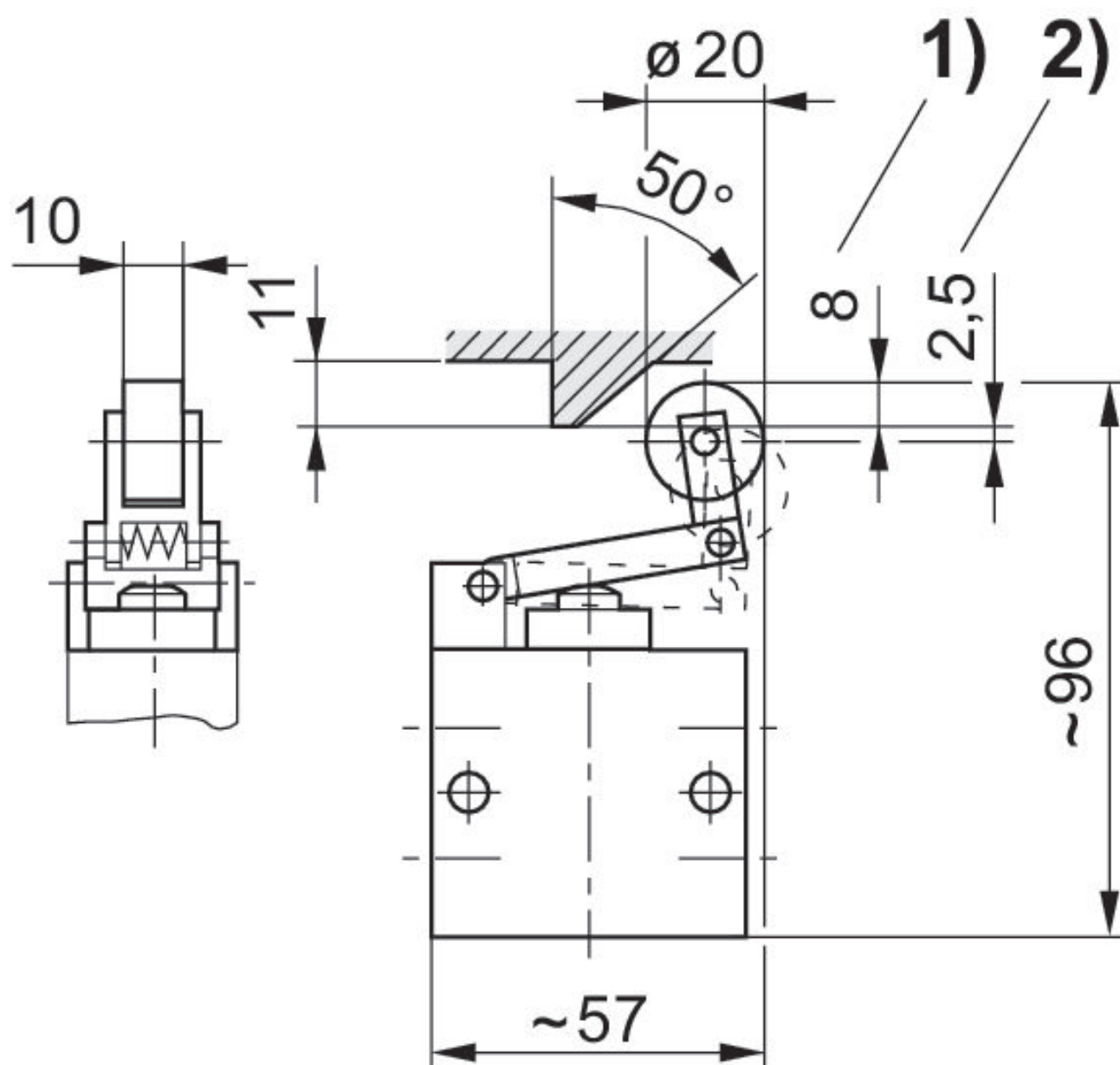


actuating torque: 40 Ncm

1) Ball

Dimensions

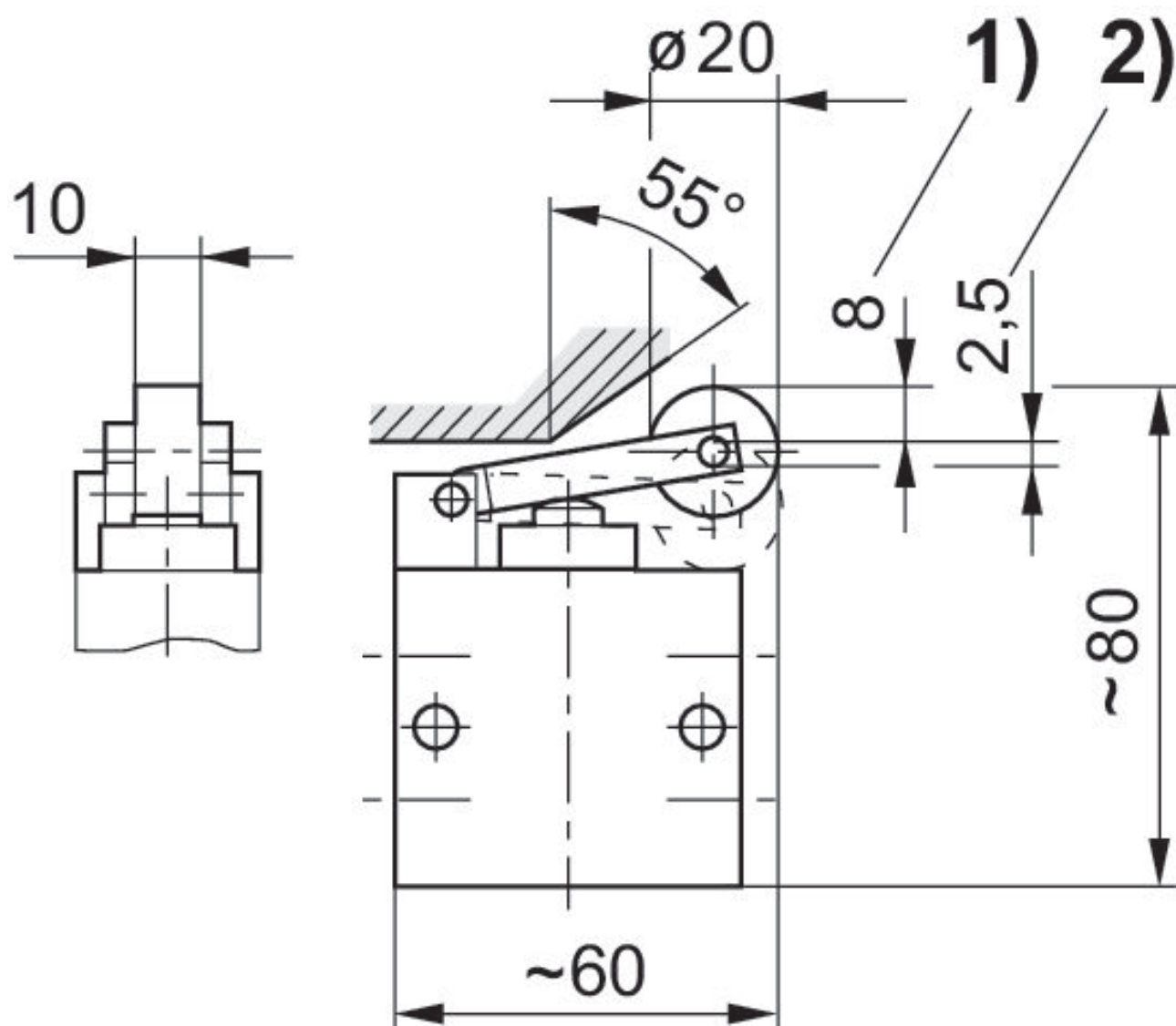
Fig. 3



1) actuating stroke 2) overstroke

Dimensions

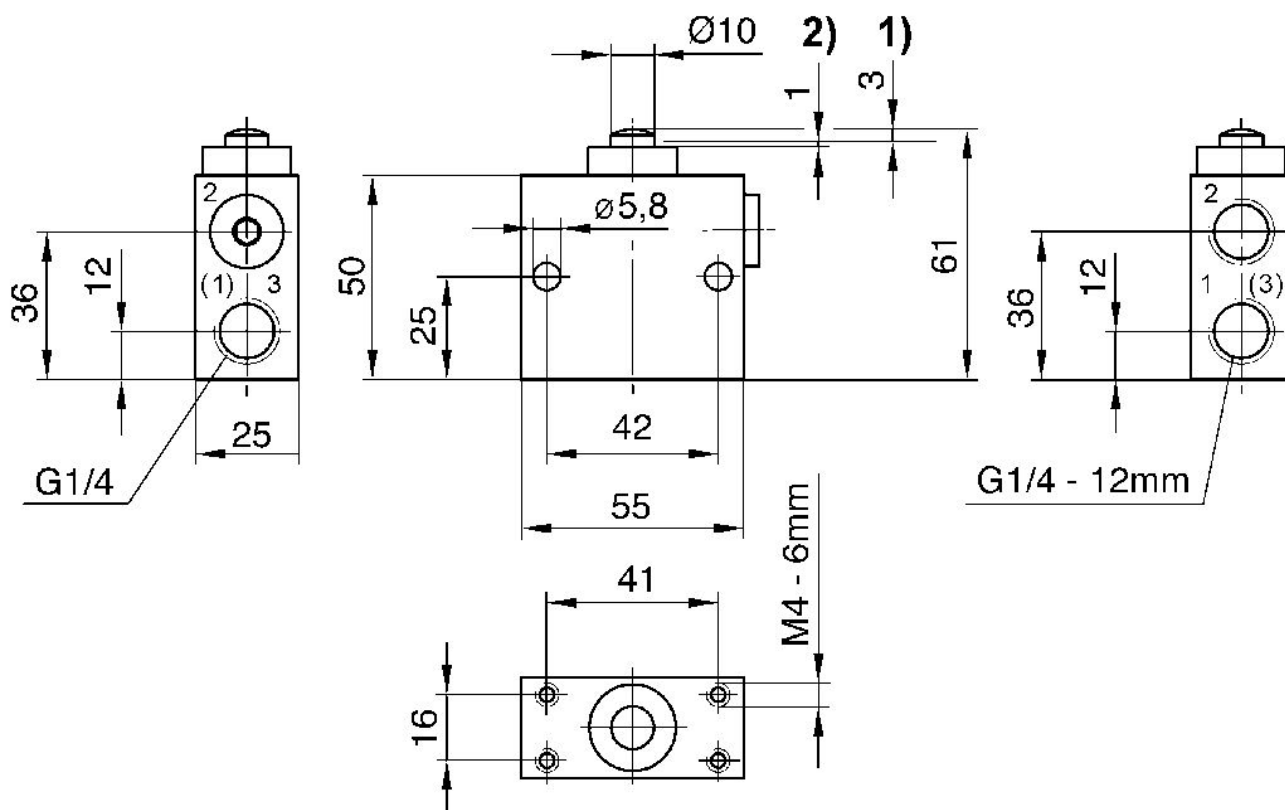
Fig. 2



1) actuating stroke 2) overstroke

Dimensions

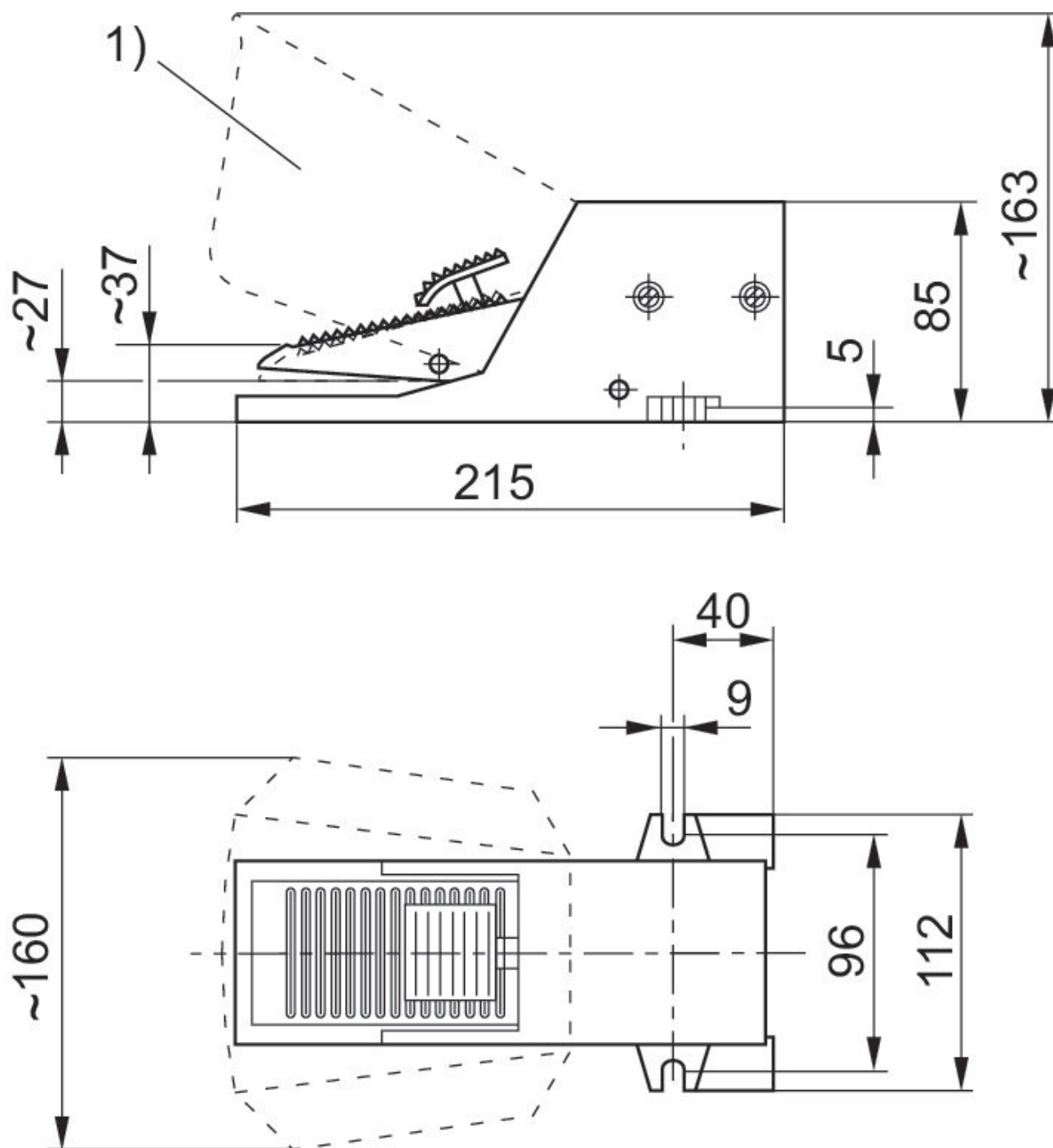
Fig. 1



1) actuating stroke 2) overstroke
Dimensions of basic valve apply to all types of actuation.

Dimensions

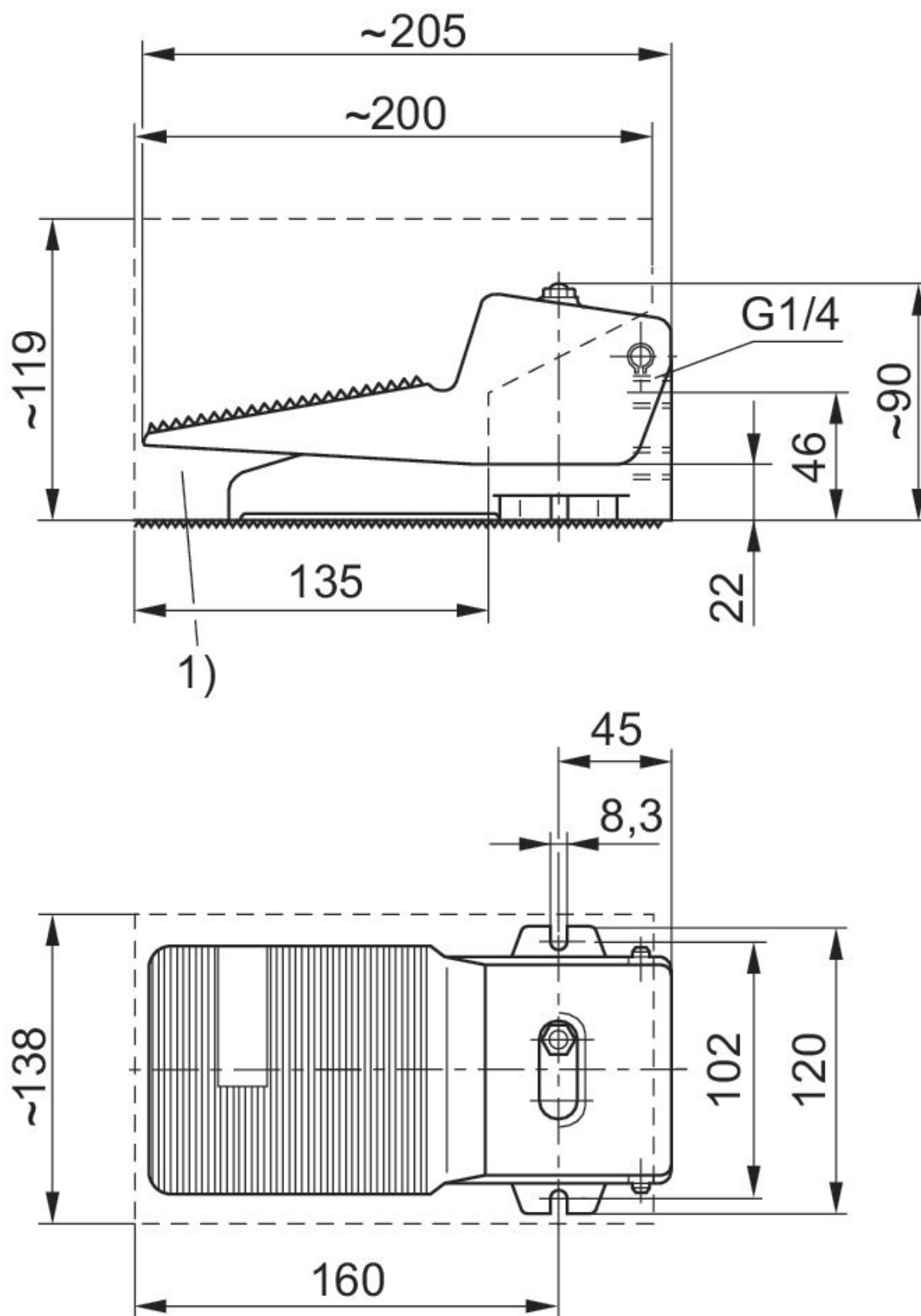
Fig. 7



1) optional protective cover, part number 1828104002

Dimensions

Fig. 6



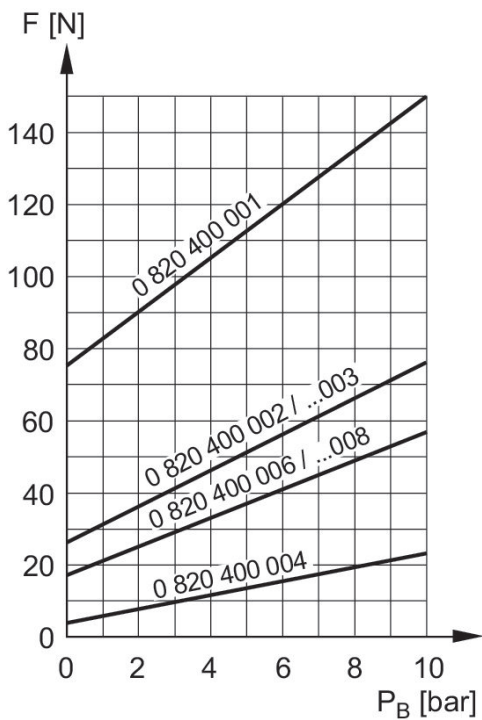
1) optional protective cover, part number 1828104001

3/2-directional valve, Series AP

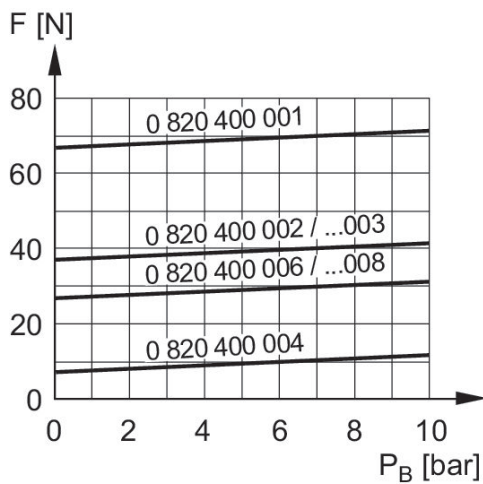
0820400008

2023-11-27

Compressed air at port 3



Actuating force+
Compressed air at port 1



F = actuating force
 P_B = Working pressure