

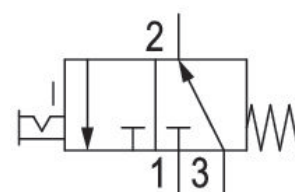
3/2-directional valve, Series DO30

0820019982

General series information

AVENTICS Series DO Directional valves

- The AVENTICS Series DO offer a simple, reliable and robust solution for all classical pilot control functions with direct electrical operation.



Technical data

Industry

Industrial

Activation

Electrically

Switching principle

3/2, with spring return

Function

NC

Compressed air connection output

CNOMO

Compressed air connection input

M5

Compressed air connection, exhaust

CNOMO

Working pressure min.

0 bar

Working pressure max

10 bar

Manual override

with detent

Electrical connection type

Plug

Electrical connection size

EN 175301-803, form A

Valve type	Poppet valve
basic valve with electrical connector	Basic valve without coil
Sealing principle	Soft Seal
Pilot valve width	30 mm
Compatibility index	15
Connection type	Plate valve with pipe connection
Standards	CNOMO / NFE 49-003-1
ATEX	Suitable for ATEX
Min. ambient temperature	-10 °C
Max. ambient temperature	50 °C
Min. medium temperature	-10 °C
Max. medium temperature	50 °C
Medium	Compressed air
Max. particle size	5 µm
Oil content of compressed air min.	0 mg/m ³
Oil content of compressed air max.	5 mg/m ³
Nominal flow Qn 1 to 2	72 l/min
Nominal flow Qn 2 to 3	105 l/min
Power consumption	Higher voltage tolerance
Duty cycle	100 %
Protection class with connection	IP65
Mounting on manifold strip	P-strip
mounting screws	M4
Weight	0.06 kg

Material

Housing material	Plastic
Seal material	Fluorocautchouc
Part No.	0820019982

Technical information

ATEX optional: ATEX version can be produced by combining the basic valve without coil with an ATEX coil. ATEX ID: see ATEX coils catalog page.

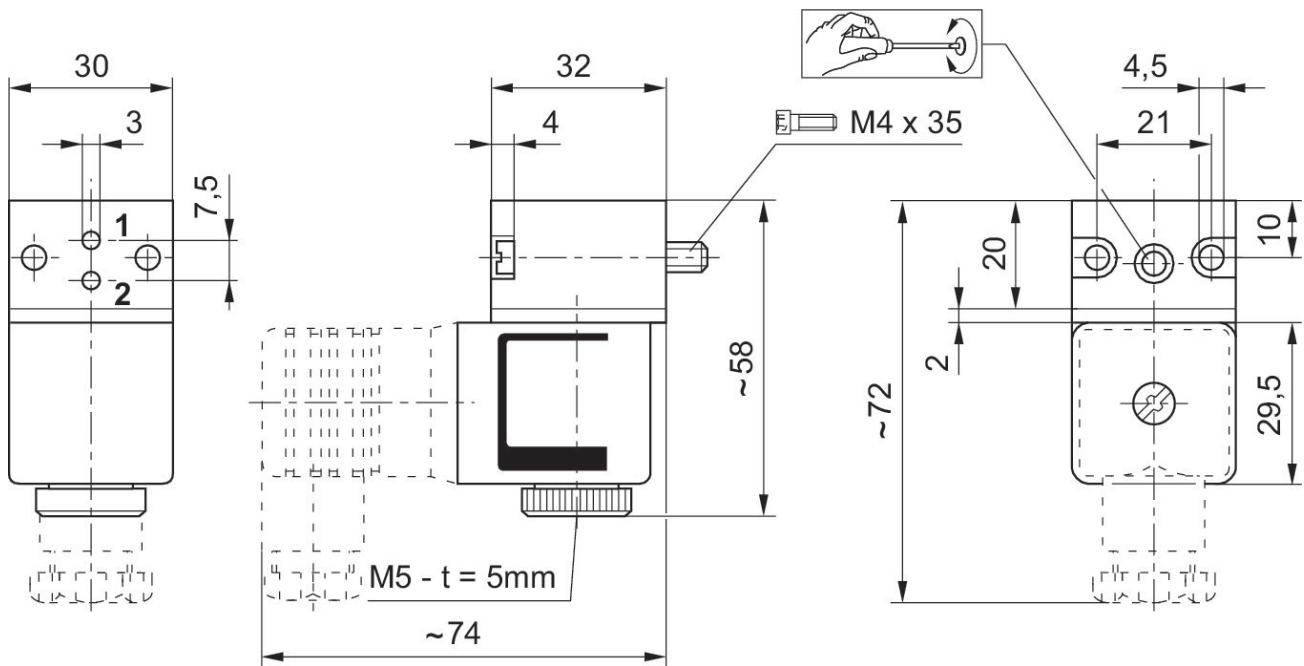
The min. control pressure must be adhered to, since otherwise faulty switching and valve failure may result!

The pressure dew point must be at least 15 °C under ambient and medium temperature and may not exceed 3 °C .

The oil content of compressed air must remain constant during the life cycle.

Use only the approved oils from AVENTICS. Further information can be found in the "Technical information" document (available in <https://www.emerson.com/en-us/support>).

Dimensions



t = depth