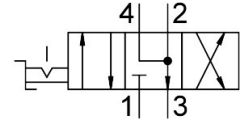
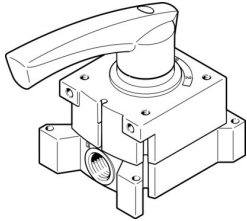


Hand lever valve VHER-H-B43E-G12

Part number: 3192067

FESTO



[PDF](#) General operating condition

Data sheet

| Feature | Value |
|---|--|
| Valve function | 4/3 exhausted |
| Type of actuation | Manual |
| Construction width | 95 mm |
| Standard nominal flow rate (standardised to DIN 1343) | 3200 l/min |
| pneumatic working port | G1/2 |
| Operating pressure | 0 bar ... 10 bar |
| Note on operating pressure | Vacuum operation at connection 3 only Zweidr.-Betr. Anschluss 1 |
| Design | Rotary gate valve |
| Nominal size | 12 mm |
| Exhaust-air function | With flow control option |
| Instructions on use | Actuate manually only |
| Sealing principle | Hard |
| Type of piloting | Direct |
| Flow direction | Non-reversible |
| Symbol | 00995941 |
| Overlap | yes |
| Switching position indicator | With accessories |
| Operating medium | Compressed air to ISO 8573-1:2010 [7:4:4] |
| Note on operating and pilot medium | Lubricated operation possible (in which case lubricated operation will always be required) |
| Corrosion resistance class CRC | 2 - Moderate corrosion stress |
| LABS (PWIS) conformity | VDMA24364-B1/B2-L |
| Media temperature | -20 °C ... 80 °C |
| Ambient temperature | -20 °C ... 80 °C |
| Actuating torque | 5 Nm |
| Product weight | 1010 g |
| Type of mounting | Either: Front panel mounting With through-hole |
| Pneumatic connection, port 1 | G1/2 |
| Pneumatic connection, port 2 | G1/2 |
| Pneumatic connection, port 3 | G1/2 |
| Pneumatic connection, port 4 | G1/2 |
| Note on materials | RoHS-compliant |
| Material seals | NBR |
| Material housing | Die-cast aluminium |

| Feature | Value |
|----------------|--------------------|
| Material lever | Die-cast aluminium |