

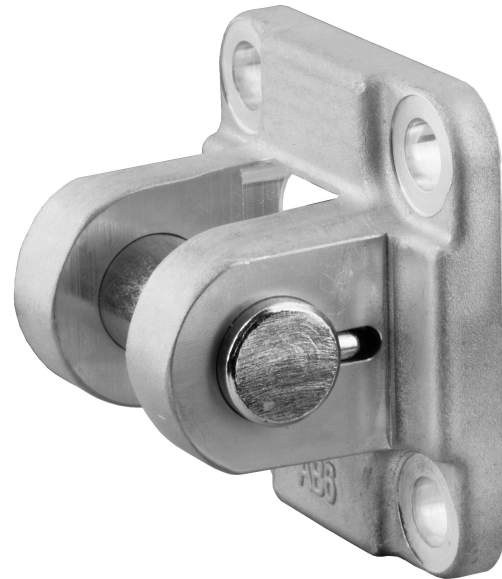
# Clevis mounting AB6, Series CM1

1827001593

Clevis  
mounting

2023-11-14

## AVENTICS Clevis mountings



### Technical data

Industry	Industrial
Standardization	ISO 15552
Piston diameter	32 mm
Swivel bearing $\varnothing$	10 mm

### Material

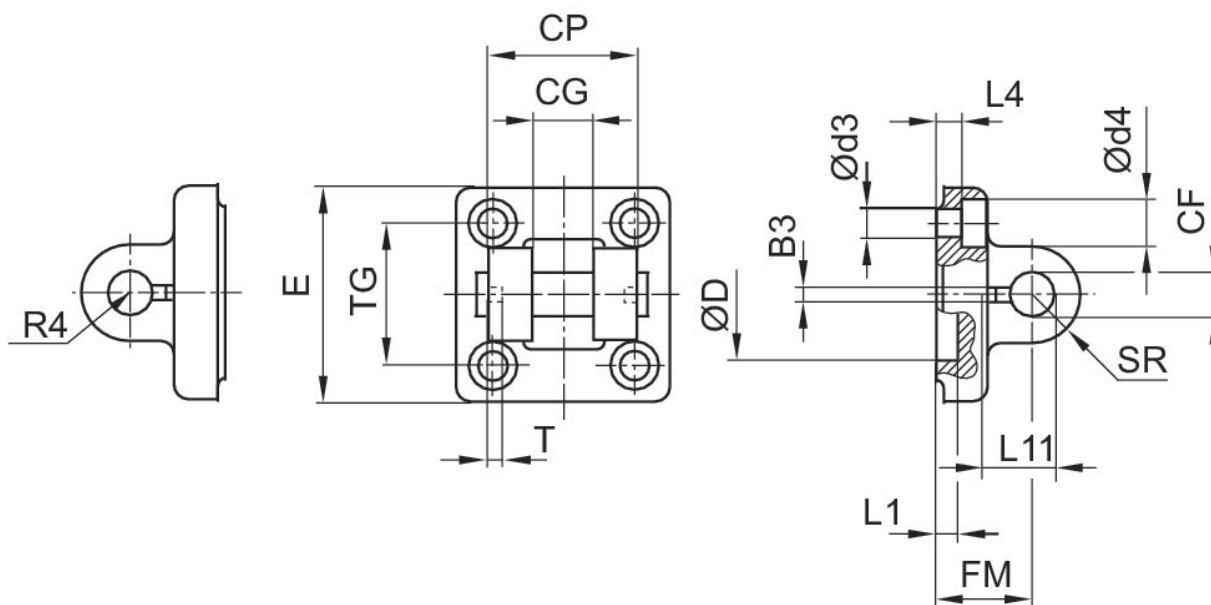
Housing material	Aluminum
Surface housing	forged
Screws material	Steel, chrome-plated
Surface screws	galvanized
Part No.	1827001593

# Clevis mounting AB6, Series CM1

1827001593

Clevis  
mounting

2023-11-14



Piston Ø	Part No.	B3 ±0,2	Ø CF F7	CG D10	CP d12	Ø d3	Ø d4	Ø D	E
32	1827001593	3.3	10	14	34	6.6	11	30	46
40	1827001594	4.3	12	16	40	6.6	11	35	52
50	1827001595	4.3	16	21	45	9	15	40	64
63	1827002024	4.3	16	21	51	9	15	45	74
80	1827001597	4.3	20	25	65	11	18	45	94
100	1827001598	4.3	20	25	75	11	18	55	113
125	1827001599	6.3	30	37	97	14	20	60	138
160	1827001600	6.3	35	43	122	18	26	65	180
200	1827001601	6.3	35	43	122	18	26	75	220
250	1827001602	8.3	40	49	125	22	33	90	280
320	5239013432	8.3	50	60	150	26	36	110	340

Piston Ø	FM ±0,2	L1 min.	L4 ±0,5	L11 -0,5	R4	SR	T ±0,2	TG
32	22	4.5	5.5	16.5	17	10	3	32,5 ±0,2
40	25	4.5	5.5	18	20	12	4	38 ±0,2
50	27	4.5	6.5	23	22	15	4	46,5 ±0,2
63	32	4.5	6.5	23	25	15	4	56,5 ±0,2
80	36	4.5	10	27	30	20	4	72 ±0,2
100	41	4.5	10	27	32	20	4	89 ±0,2
125	50	7	10	40	42	26	6	110 ±0,3
160	55	10	10	45	46	32.5	6	140 ±0,3

# Clevis mounting AB6, Series CM1

1827001593

Clevis  
mounting

2023-11-14

Piston Ø	FM ±0,2	L1 min.	L4 ±0,5	L11 -0,5	R4	SR	T ±0,2	TG
200	60	10	11	45	49	32.5	6	175 ±0,3
250	70	12	11	53	55	40	8	220 ±0,3
320	80	11	15	69	65	50	8	270 ±0,3