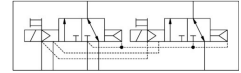
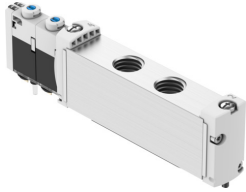


Solenoid valve

VUVG-S18-T32C-AZT-G14-1T1L

FESTO

Part number: 8004873



[PDF](#) General operating condition

Data sheet

Feature	Value
Valve function	2x3/2-way, monostable, closed
Type of actuation	Electric
Valve size	18 mm
Standard nominal flow rate (standardised to DIN 1343)	950 l/min
pneumatic working port	G1/4
Operating voltage	24V DC
Operating pressure	0.15 MPa ... 1 MPa
Operating pressure	1.5 bar ... 10 bar
Design	Piston gate valve
Type of reset	Pneumatic spring
Approval	c UL us - Recognized (OL)
Degree of protection	IP65 IP67
Exhaust-air function	With flow control option
Sealing principle	Soft
Mounting position	optional
Manual override	Detenting Non-detenting
Type of piloting	Pilot actuated
Pilot air supply	External
Symbol	00992905
lap	Overlap
Signal status display	LED
Pilot pressure	0.15 MPa ... 0.8 MPa
Pilot pressure	1.5 bar ... 8 bar
Max. switching frequency	3 Hz
Switching time off	37 ms
Switching time on	15 ms
Duty cycle	100%
Max. positive test pulse with 0 signal	1600 µs
Max. negative test pulse with 1 signal	3000 µs
Characteristic coil data	22 V DC: 1.0 W
Permissible voltage fluctuations	+/- 10 %
Operating medium	Compressed air to ISO 8573-1:2010 [7:4:4]
Note on operating and pilot medium	Lubricated operation possible (in which case lubricated operation will always be required)

Feature	Value
Vibration resistance	Transport application test with severity level 2 to FN 942017-4 and EN 60068-2-6
Shock resistance	Shock test with severity level 2 to FN 942017-5 and EN 60068-2-27
Corrosion resistance class CRC	2 - Moderate corrosion stress
LABS (PWIS) conformity	VDMA24364-B1/B2-L
Media temperature	-5 °C ... 60 °C
Pilot medium	Compressed air to ISO 8573-1:2010 [7:4:4]
Ambient temperature	-5 °C ... 60 °C
Product weight	145 g
Electrical connection	Via sub-base
Type of mounting	On manifold rail
Pneumatic connection, port 2	G1/4
Pneumatic connection, port 4	G1/4
Note on materials	RoHS-compliant
Material seals	HNBR NBR
Material housing	Wrought aluminium alloy