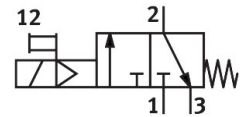
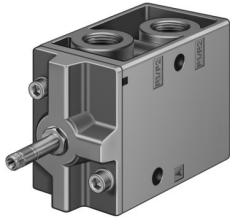


Solenoid valve MFH-3-3/4

Part number: 11967

FESTO



[PDF](#) General operating condition

Data sheet

Feature	Value
Valve function	3/2-way, closed, monostable
Type of actuation	Electric
Construction width	68 mm
Standard nominal flow rate (standardised to DIN 1343)	7500 l/min
pneumatic working port	G3/4
Operating voltage	Via solenoid coil, must be ordered separately
Operating pressure	0.2 MPa ... 0.8 MPa
Operating pressure	2 bar ... 8 bar
Design	Poppet seat
Type of reset	Mechanical spring
Approval	c UL us - Recognized (OL)
Degree of protection	IP65
Nominal size	19 mm
Exhaust-air function	With flow control option
Sealing principle	Soft
Mounting position	optional
Manual override	Detenting
Type of piloting	Pilot actuated
Pilot air supply	Internal
Flow direction	Non-reversible
Symbol	00991008
lap	Underlap
Switching time off	32 ms
Switching time on	36 ms
Max. positive test pulse with 0 signal	2200 µs
Characteristic coil data	See solenoid coil, to be ordered separately
Operating medium	Compressed air to ISO 8573-1:2010 [7:4:4]
Note on operating and pilot medium	Lubricated operation possible (in which case lubricated operation will always be required)
Corrosion resistance class CRC	1 - Low corrosion stress
LABS (PWIS) conformity	VDMA24364-B1/B2-L
Storage temperature	-20 °C ... 60 °C
Media temperature	-10 °C ... 60 °C
Ambient temperature	-5 °C ... 40 °C
Product weight	1260 g
Electrical connection	Via F coil, to be ordered separately

Feature	Value
Type of mounting	Either: On manifold rail With through-hole
Pilot exhaust port 82	M5
Pneumatic connection, port 1	G3/4
Pneumatic connection, port 2	G3/4
Pneumatic connection, port 3	G3/4
Note on materials	RoHS-compliant
Material seals	NBR
Material housing	Die-cast aluminium