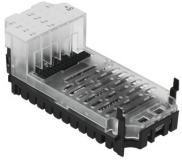


# Output module CPX-4DA

Part number: 195754

FESTO



 General operating condition

## Data sheet

Feature	Value
Dimensions (W x L x H)	(incl. interlinking block and connection technology) 50 x 107 x 50 mm
Product weight	42 g
Ambient temperature	-5 °C ... 50 °C
Storage temperature	-20 °C ... 70 °C
Degree of protection	Dependent on the manifold block
Corrosion resistance class CRC	1 - Low corrosion stress (when installed)
LABS (PWIS) conformity	VDMA24364-B2-L
Material housing	PA-reinforced PC
LED display	1 Group diagnostics 4 channel diagnostics 4 Channel status
Diagnosis	Short circuit/overload per channel Undervoltage of outputs
Number of outputs	4
Parameterisation	Fail-safe per channel Forcing per channel Idle mode per channel Behaviour after short circuit Module monitoring
Operational voltage range DC	18 V ... 30 V
Nominal operating voltage DC	24 V
Intern power consumption nominal operating voltage	Typ. 16 mA
Characteristic for outputs	Based on IEC1131-T2
Switching logic for outputs	PNP (positive switching)
Max. residual current outputs per module	4 A
Max. power supply per channel	1 A (24 W lamp load)
Isolation channel - channel	no
Isolation channel - internal bus	Yes, with intermediate air supply
Fuse protection (short circuit)	Internal electronic fuse per channel