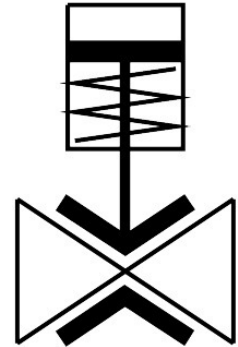


Pinch valve VZQA-C-M22U-15-S5S5-V4V4E-4

Part number: 3022833

FESTO



[PDF](#) [General operating condition](#)

Data sheet

Feature	Value
Design	Pinch valve, pneumatically actuated
Type of actuation	Pneumatic
Sealing principle	Soft
Mounting position	optional
Type of mounting	In-line installation
Connection Process valve	Clamp to DIN 32676 series A
Nominal size DN	15
Valve function	2/2 open, single solenoid
Flow direction	Reversible
Medium pressure	0 MPa ... 0.4 MPa
Medium pressure	0 bar ... 4 bar
Medium pressure	0 psi ... 58 psi
Note on the medium pressure	Use in the vacuum range was tested up to -0.09 MPa with the air at room temperature. Depending on the application, a counter-vacuum may have to be created on the control side to guarantee the media flow.
Operating pressure	0.1 MPa ... 0.65 MPa
Operating pressure	1 bar ... 6.5 bar
Operating pressure	14.5 psi ... 94.25 psi
Nominal pressure PN	10
Differential pressure	0.25 MPa
Differential pressure	2.5 bar
Differential pressure	36.25 psi
Burst pressure	1.6 MPa
Burst pressure	16 bar
Burst pressure	232 psi
Overload pressure	0.78 MPa
Overload pressure	7.8 bar
Overload pressure	113.1 psi
Type of reset	Rebound resilience
Type of piloting	Externally controlled

Feature	Value
Auxiliary pilot air port 12	G1/8
Pilot medium	Compressed air to ISO 8573-1:2010 [7:4:1]
Symbol	00995245
Medium	Compressed air to ISO 8573-1:2010 [-::1] Water
Max. viscosity	4000 mm ² /s
Media temperature	-5 °C ... 100 °C
Ambient temperature	-5 °C ... 60 °C
Storage temperature	5 °C ... 20 °C
Flow rate Kv	5 m ³ /h
Switching time on	250 ms
Switching time off	250 ms
Note on materials	RoHS-compliant
LABS (PWIS) conformity	VDMA24364 zone III
Suitability for the production of Li-ion batteries	Metals with more than 1% by mass of copper, zinc or nickel are excluded from use. The exceptions are nickel in steel, chemically nickel-plated surfaces, circuit boards, cables, electrical plug connectors and coils
Material housing	High-alloy stainless steel
Material number housing	1.4404
Material housing cover	High-alloy stainless steel
Material seals	FPM
Material shut-off element	EPDM
Product weight	559 g
Suitable for use with food	See supplementary material information
Material bowl	PA6