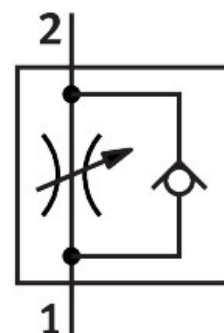


# One-way flow control valve GR-1/4

Part number: 2101

**FESTO**



[PDF](#) General operating condition

## Data sheet

Feature	Value
Valve function	One-way flow control function
Pneumatic connection, port 1	G1/4
Pneumatic connection, port 2	G1/4
Adjustment component	Knurled screw
Type of mounting	In-line installation
Standard nominal flow rate in flow control direction	370 l/min
Standard nominal flow rate in blocked direction	150 l/min
Operating pressure	0.5 bar ... 10 bar
Ambient temperature	-20 °C ... 75 °C
Material housing	Wrought aluminium alloy
Explosion protection	The information in the certificate must be observed! Zone 1 (ATEX) Zone 2 (ATEX) Zone 21 (ATEX) Zone 22 (ATEX)
Mounting position	optional
Symbol	00991453
Standard flow rate in flow control direction 0.6-10 MPa (6-10 bar, 87-10 psi)	570 l/min
Standard flow rate in non-return direction 0.6-10 MPa (6-10 bar, 87-10 psi)	340 l/min
Operating medium	Compressed air to ISO 8573-1:2010 [7:-:-]
Note on operating and pilot medium	Lubricated operation possible (in which case lubricated operation will always be required)
LABS (PWIS) conformity	VDMA24364-B1/B2-L
Media temperature	-20 °C ... 75 °C
Product weight	80 g
Note on materials	RoHS-compliant
Material seals	NBR
Material adjusting screw	Steel Galvanised